



# CS 225

## Data Structures

*January 22 – Introduction*

*G Carl Evans and Jing Jiang*



# Introduction

G Carl Evans – CS PhD

**Academic Interests:** parallel and compilers, systems programming, education, and magic fairy dust

Jing Jiang – ECE PhD

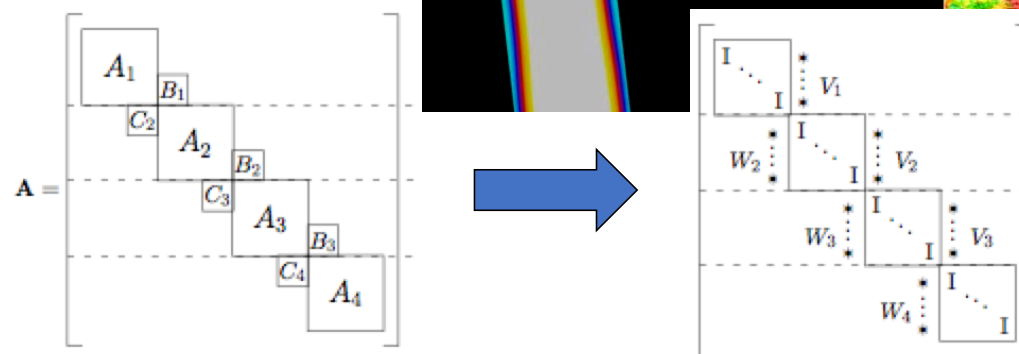
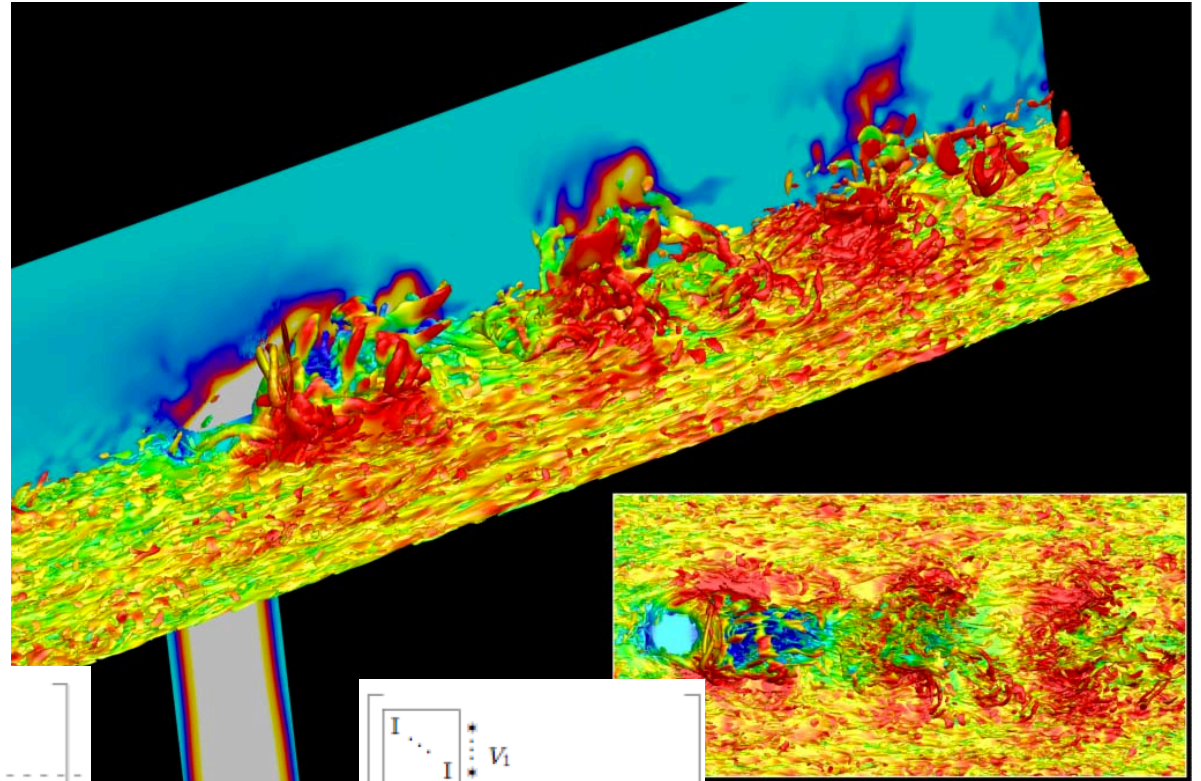
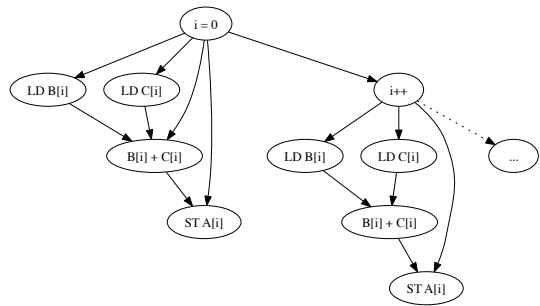
**Academic Interests:** Education, entrepreneurship, biosensor and system integration

Thierry Ramais – Course Administrator – English PhD

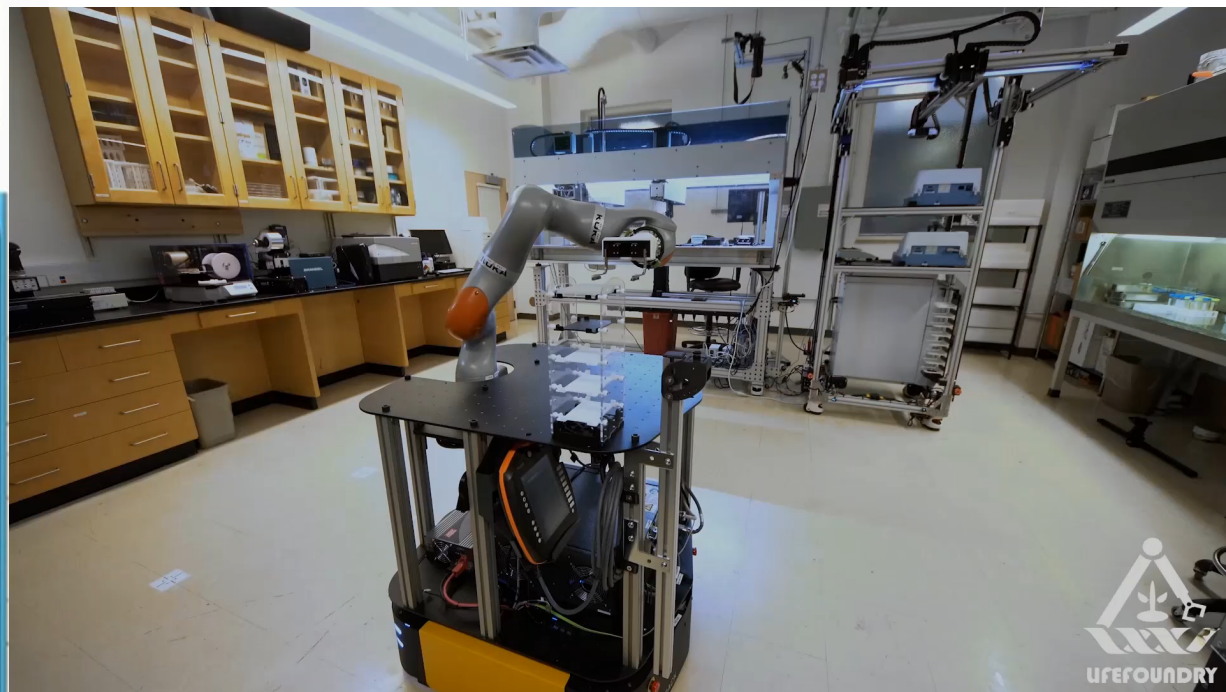
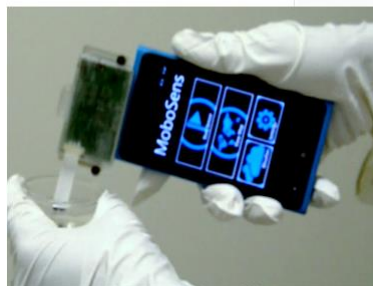
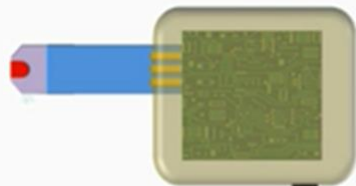
Course Staff:

You:

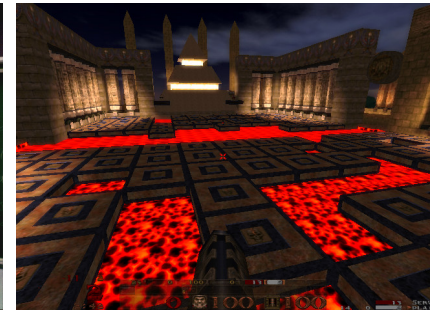
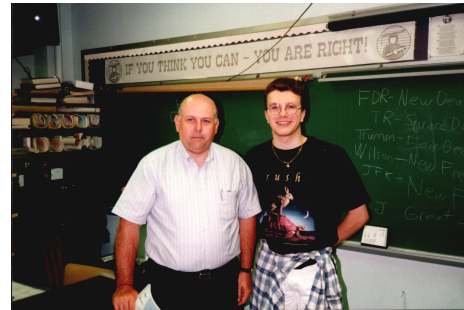
# G Carl Evans



# Jing Jiang



# Thierry Ramais






# Course Staff



You



ECE 220

CS 126

CS 125

INFO 490  
*(+others)*

CS 225

CS 173

MATH 213





# Everything about CS 225

<https://courses.engr.illinois.edu/cs225/>

## Information on:

Staff

Communications

Lab Sections

MPs

Quizzes

Grading

Academic Integrity



What is this course about?





# Variables in C++

```
int myFavoriteInt;
```

```
char grade = 'A';
```

```
double gamma = 0.653;
```

```
Cat guinevere, baxter;
```

```
Cube rubix;
```

```
Person carl;
```




# Encapsulation



# Encapsulation

Cube.h

Cube.cpp



```
1 #pragma once Cube.h
2
3 class Cube {
4     public:
5
6
7
8
9
10
11     private:
12
13
14 };
15
16
17
18
19
20
```

## Cube.cpp

```
1 #include "Cube.h"
2
3 double Cube::getVolume() {
4
5
6 }
7
8
9
10
11
12
13
14
15
16
17
18
19
20
```

## Cube.h

```
4 class Cube {
5     public:
6         double getVolume();
```