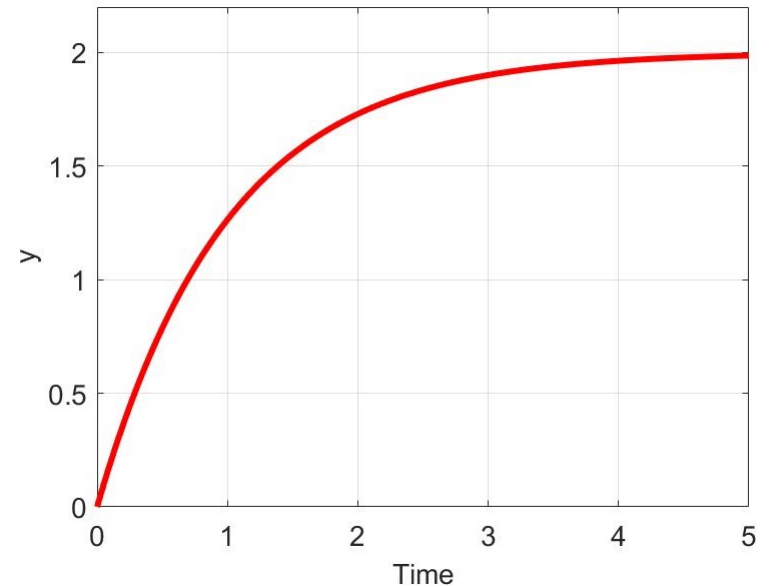
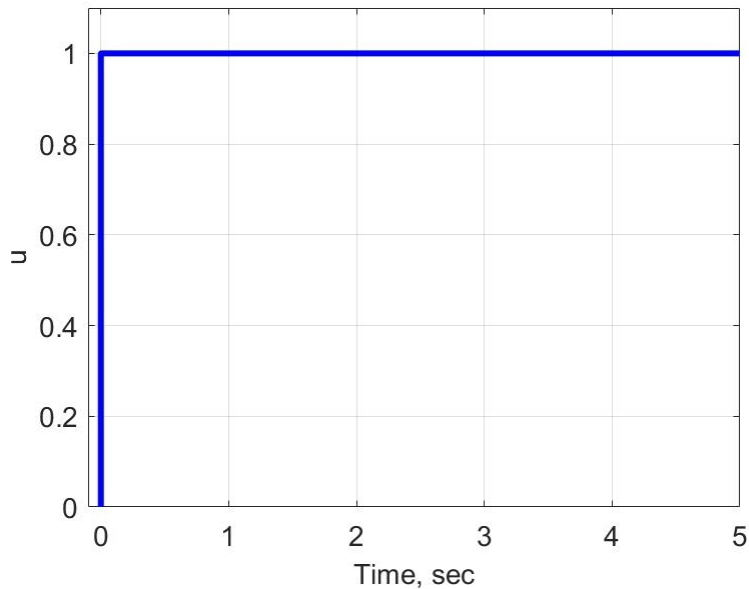
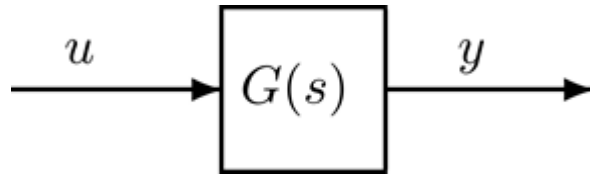


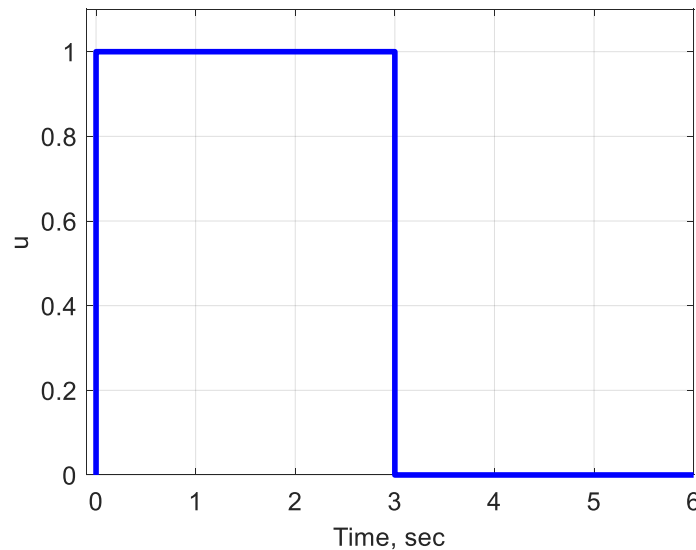
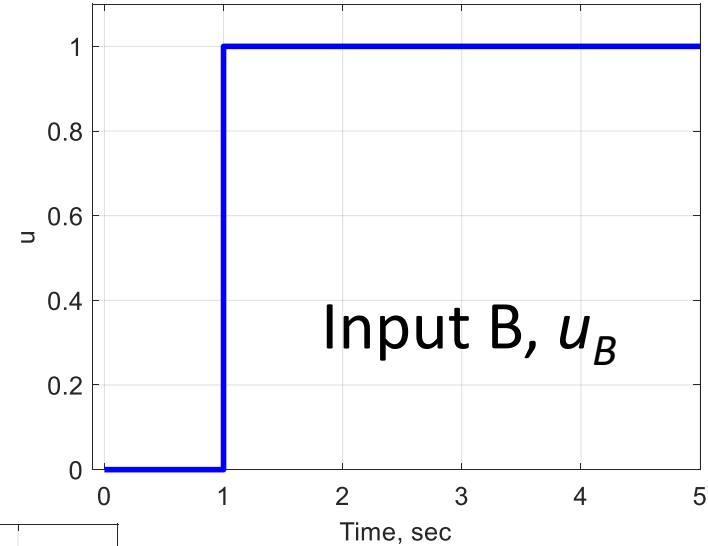
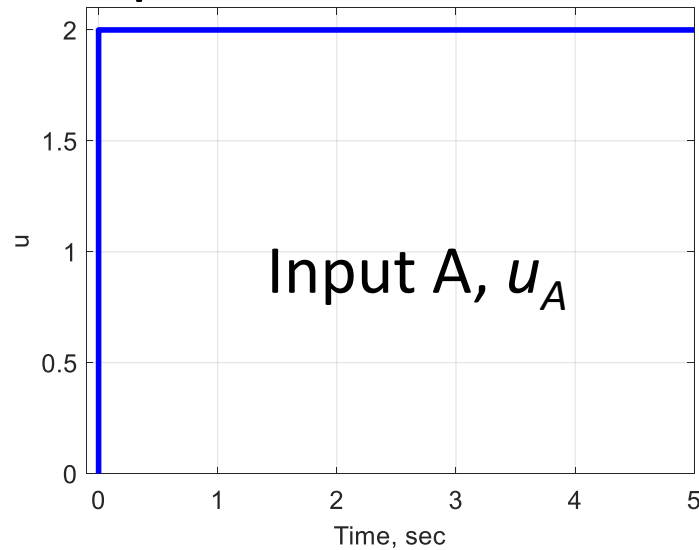
Problem 1

Let $G(s)$ be an LTI system with input u and output y . One response from zero initial conditions is shown below.



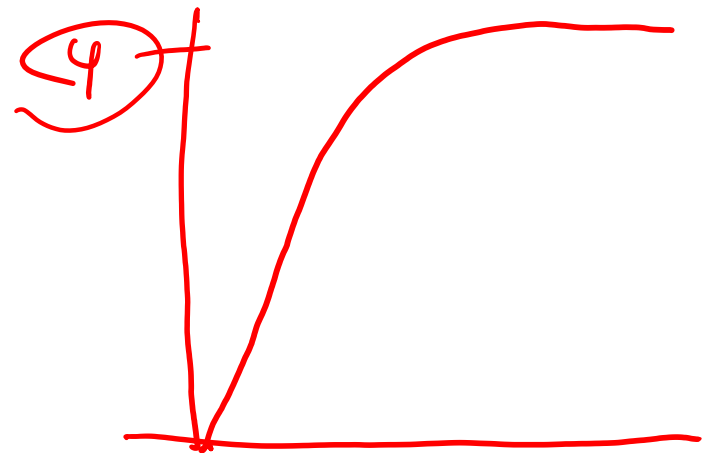
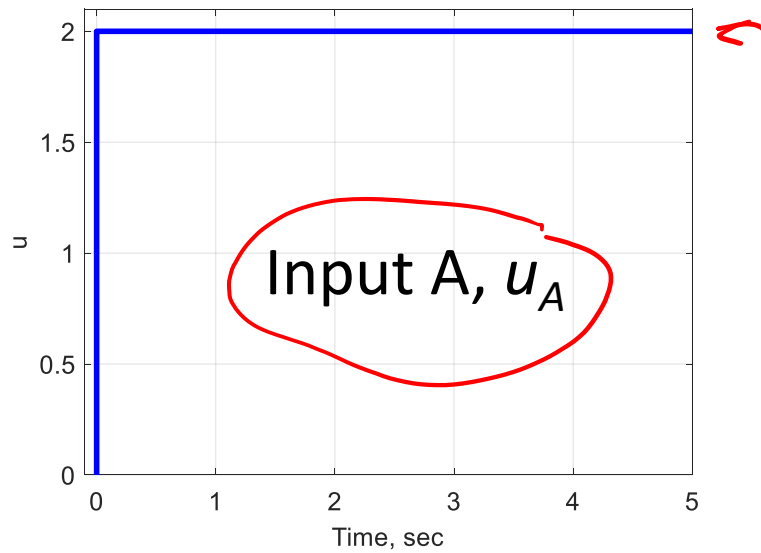
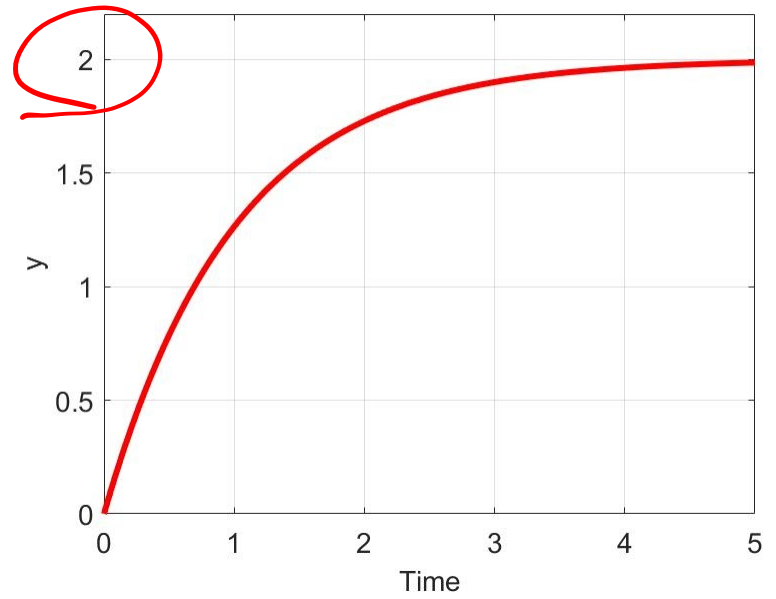
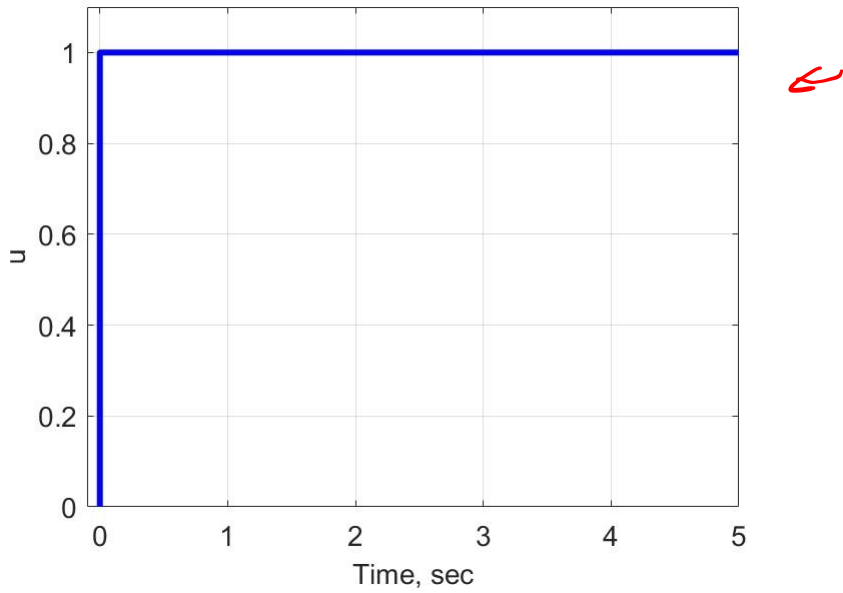
Problem 1

Sketch (very roughly) the output response of $G(s)$ to the inputs below from zero initial conditions.

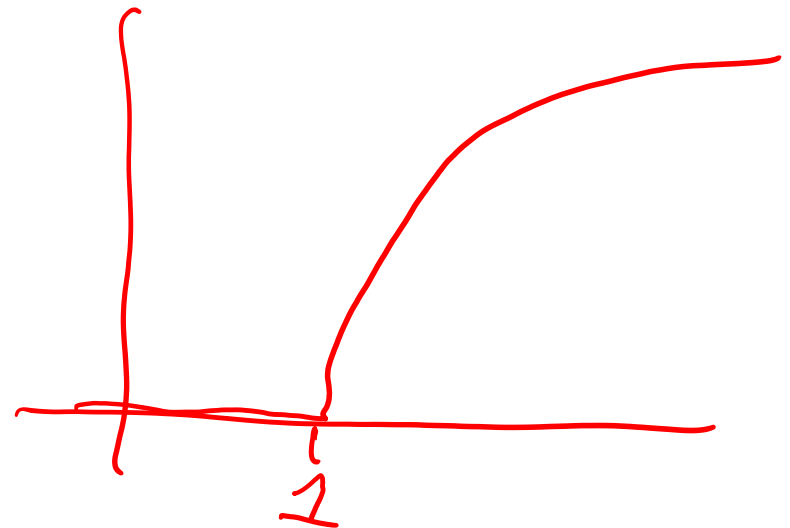
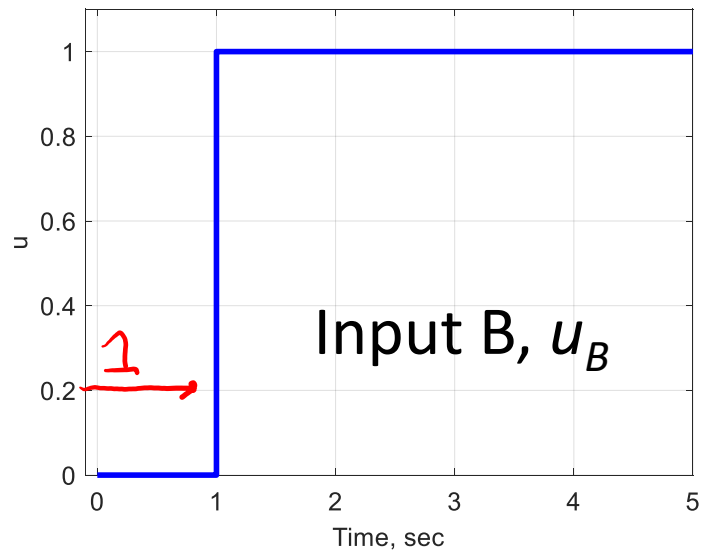
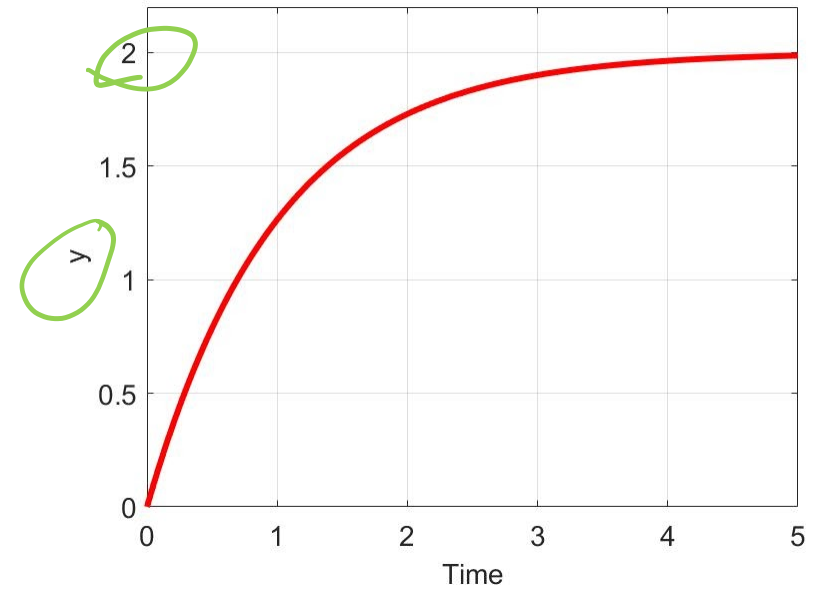
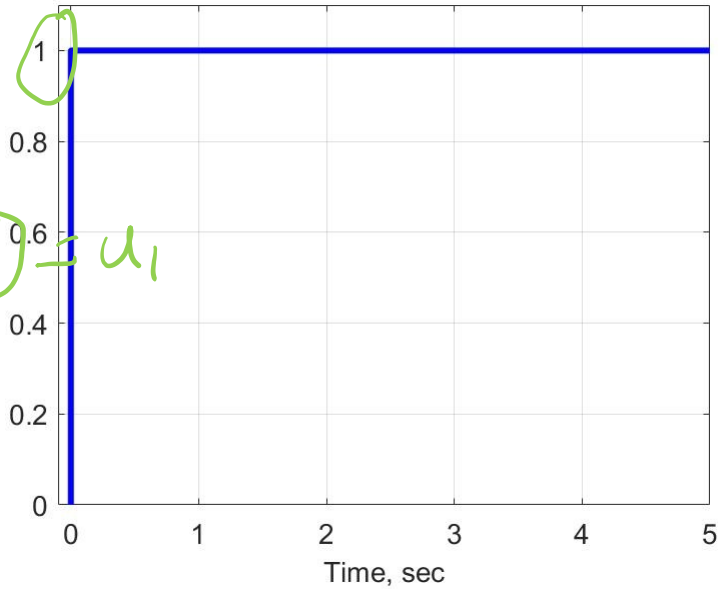


Input C, u_C

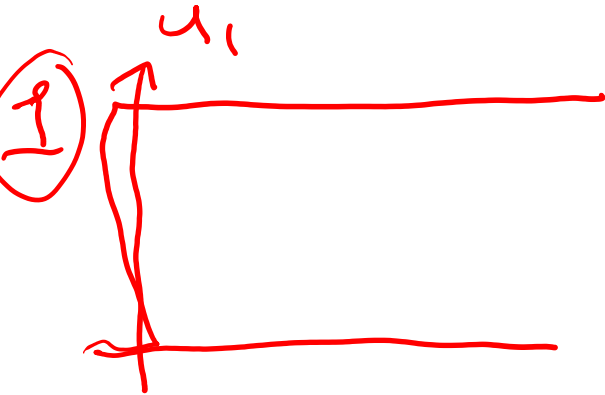
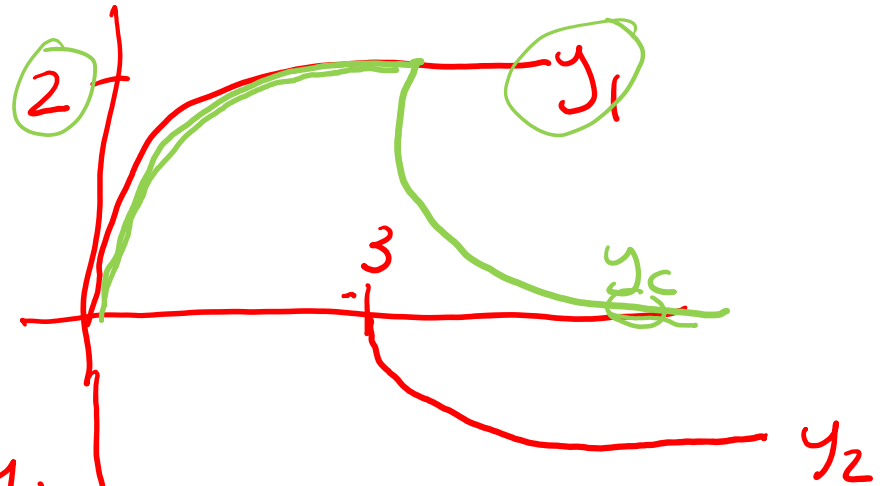
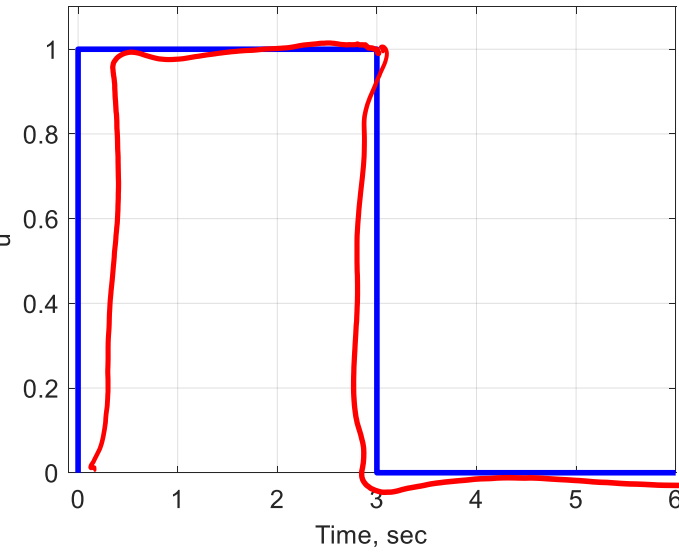
Solution 1A



Solution 1B



Solution 1C



$$u_C = u_1 + u_2$$

