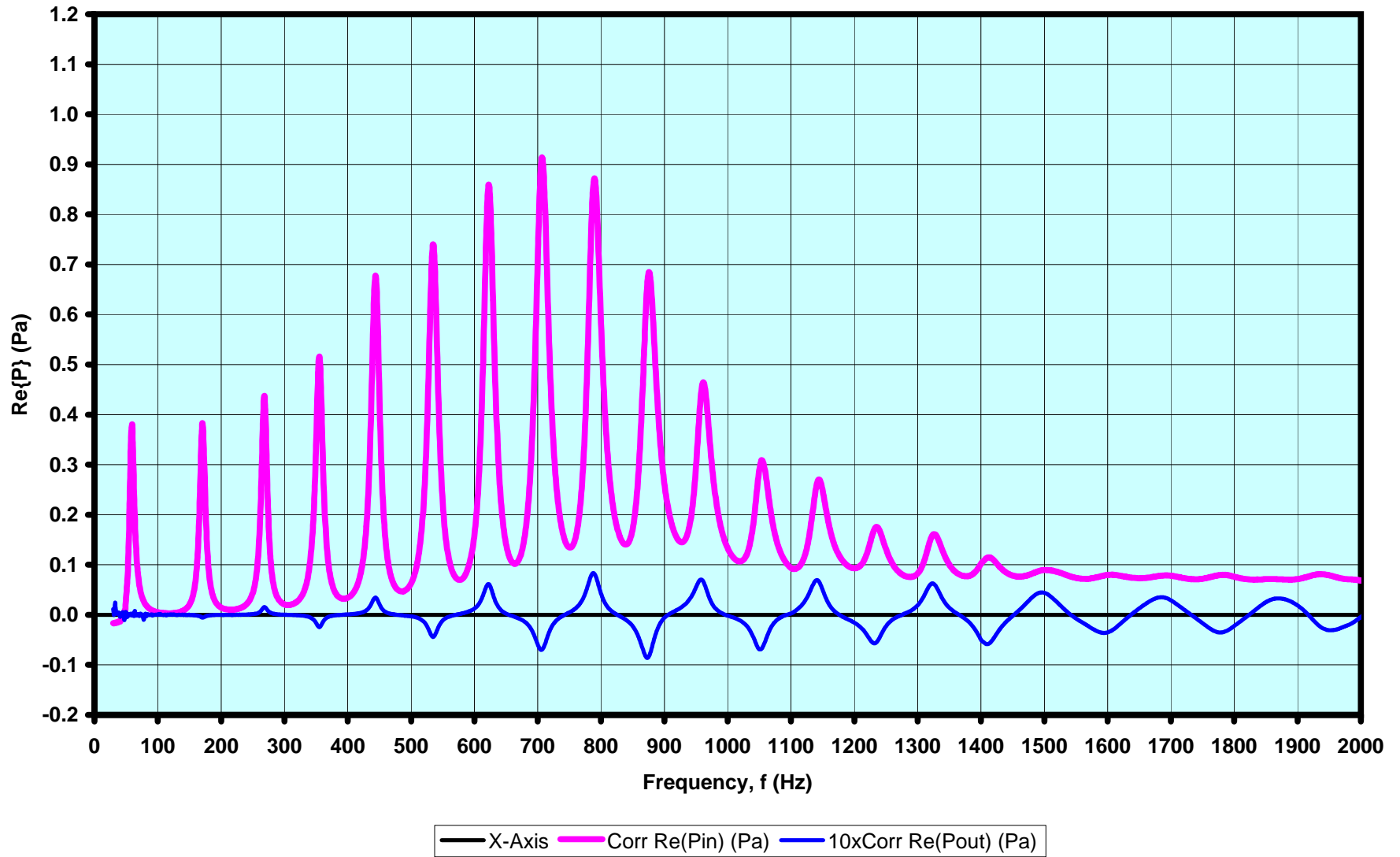
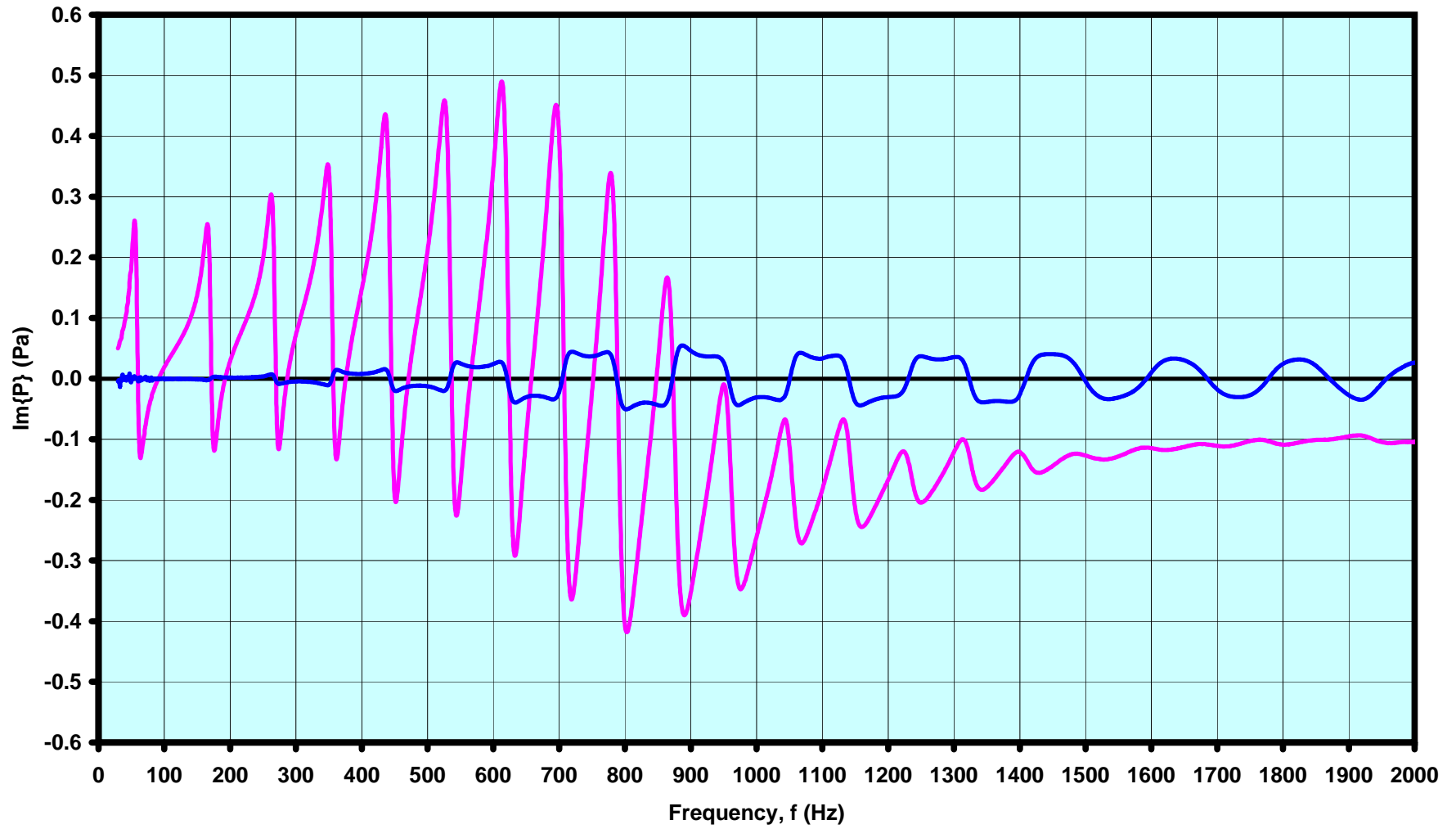


Bach Bb Trumpet Dn-Up-Dn 4LI Data: $\text{Re}\{P_{in}\}$ & $\text{Re}\{P_{out}\}$ vs. f
UIUC Physics 199POM/498POM 10/26/07

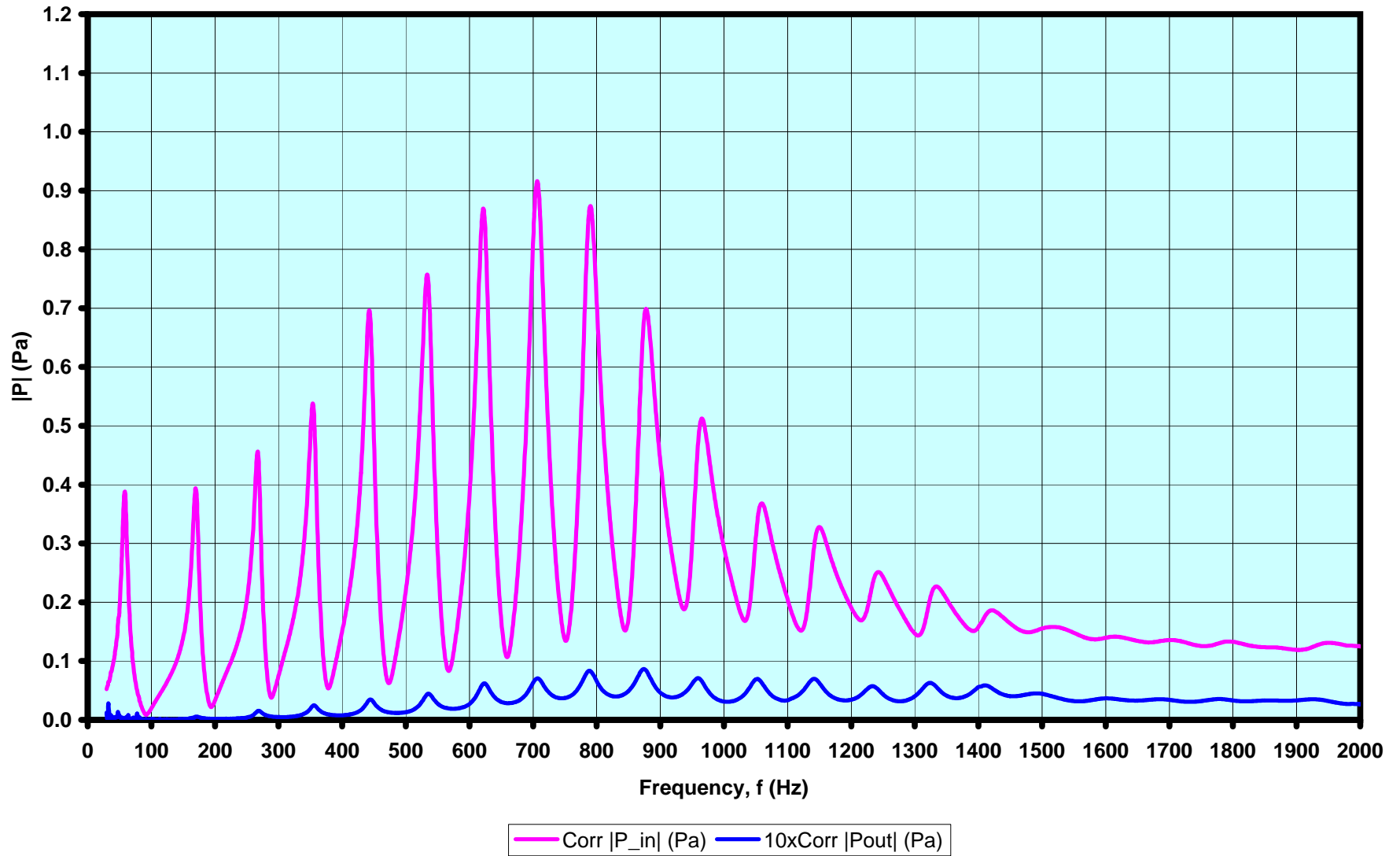


Bach Bb Trumpet Dn-Up-Dn 4LI Data: $\text{Im}\{P_{in}\}$ & $\text{Im}\{P_{out}\}$ vs. f
UIUC Physics 199POM/498POM 10/26/07

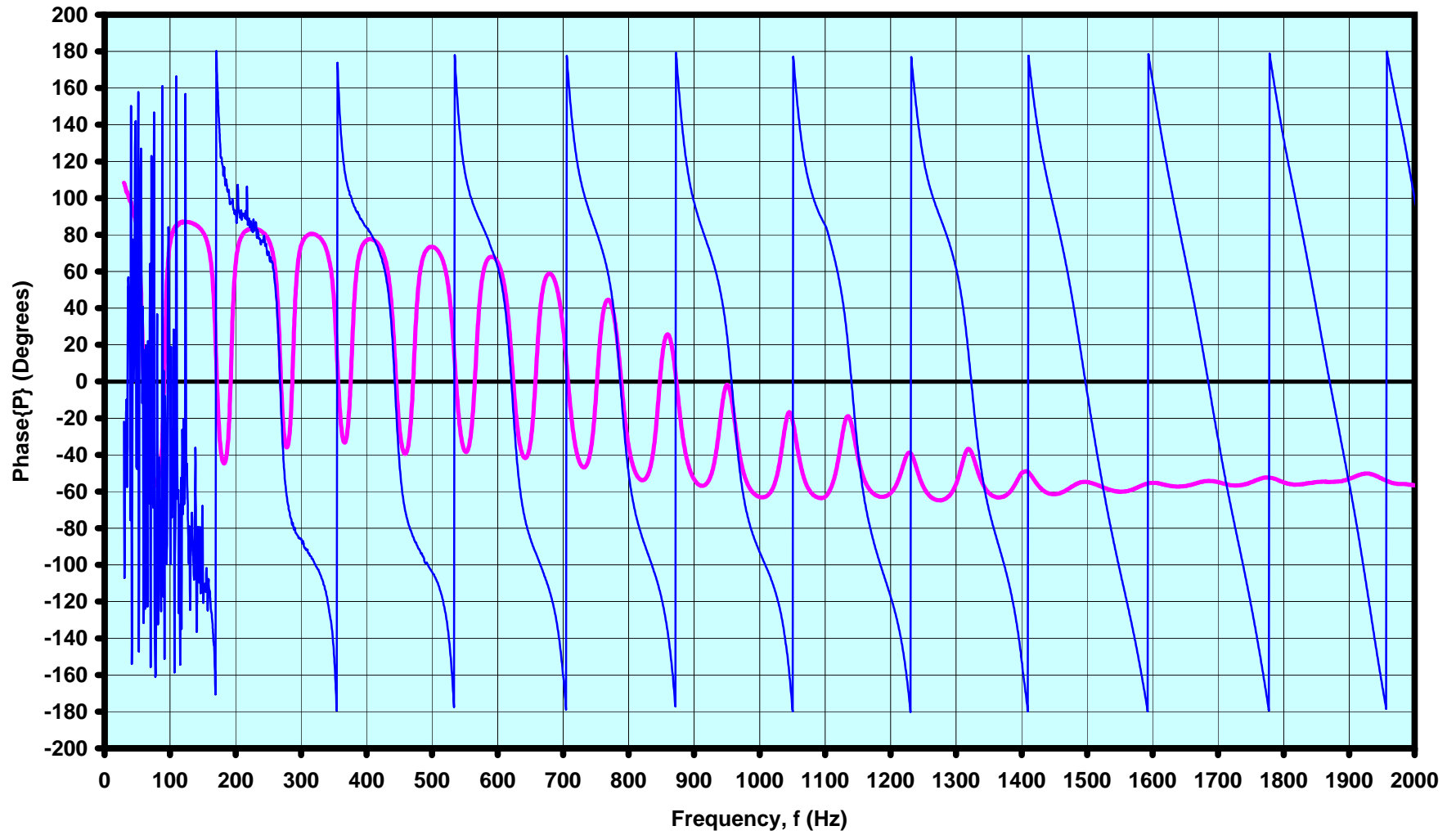


— X-Axis — Corr Im(Pin) (Pa) — 10xCorr Im(Pout) (Pa)

Bach Bb Trumpet Dn-Up-Dn 4LI Data: |P_{in}| & |P_{out}| vs. f
UIUC Physics 199POM/498POM 10/26/07

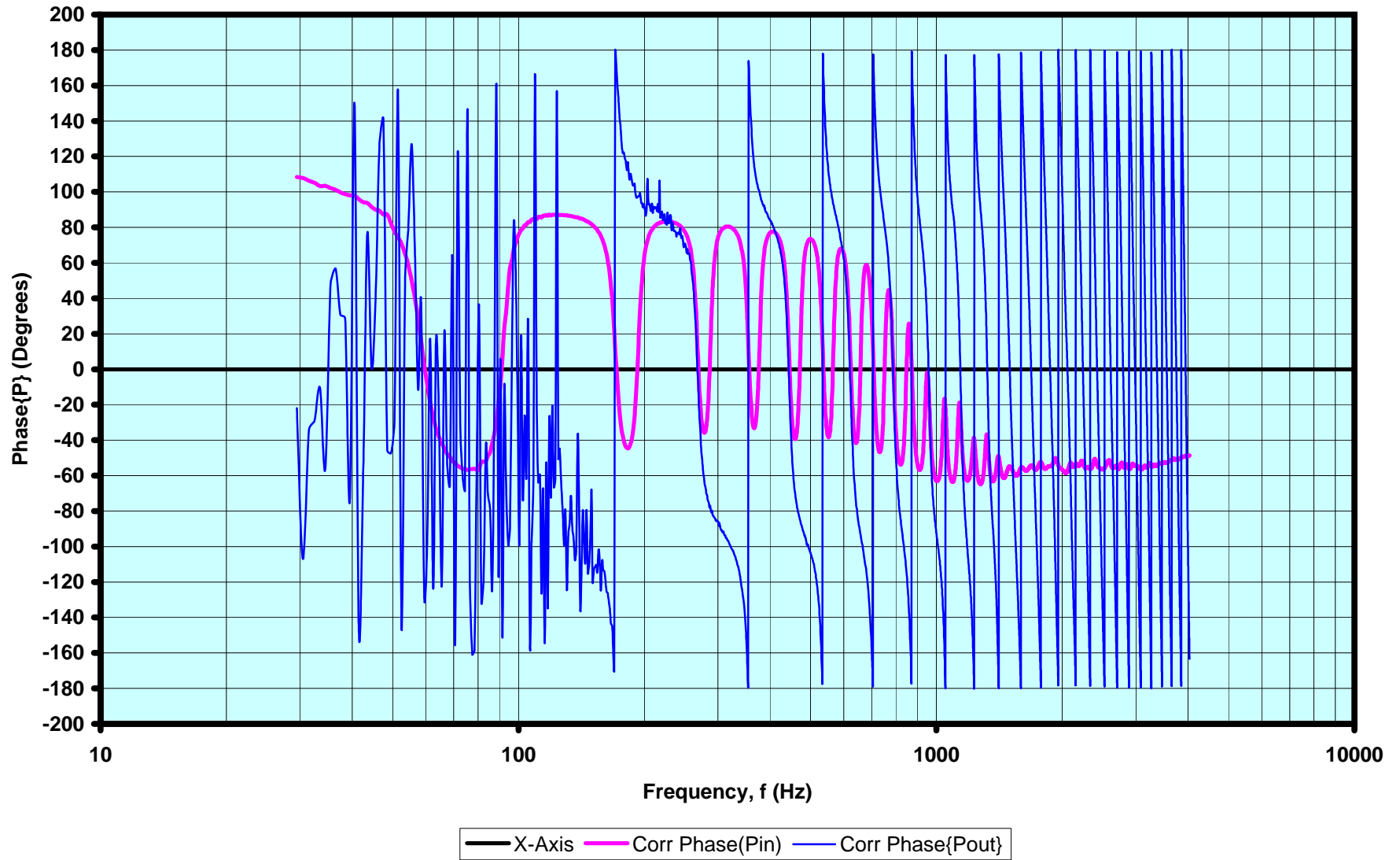


Bach Bb Trumpet Dn-Up-Dn 4LI Data: Phase{Pin} & Phase{Pout} vs. f
UIUC Physics 199POM/498POM 10/26/07

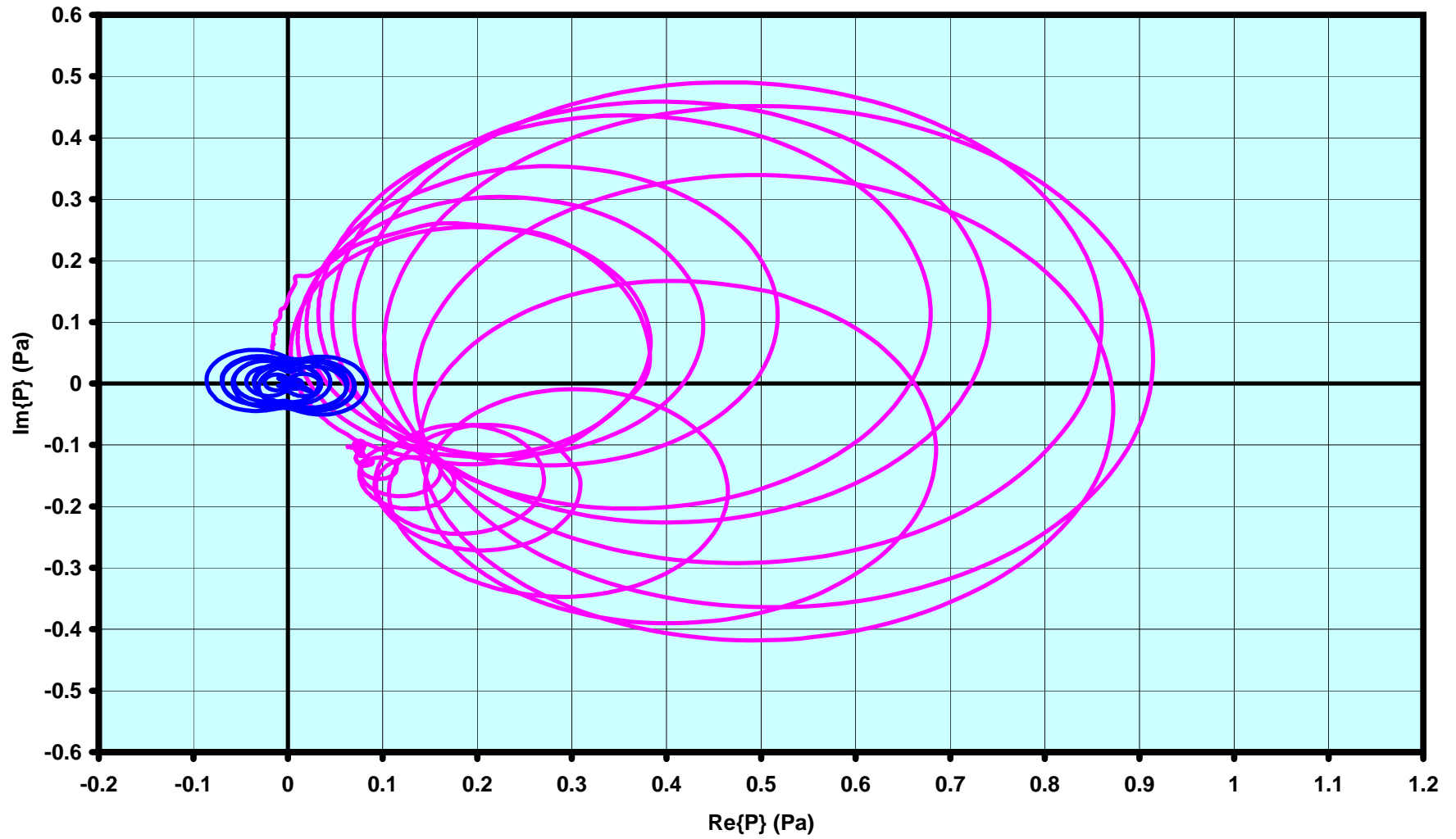


— X-Axis — Corr Phase{Pin} — Corr Phase{Pout}

Bach Bb Trumpet Dn-Up-Dn 4LI Data: Phase{Pin} & Phase{Pout} vs. Log f
UIUC Physics 199POM/498POM 10/26/07

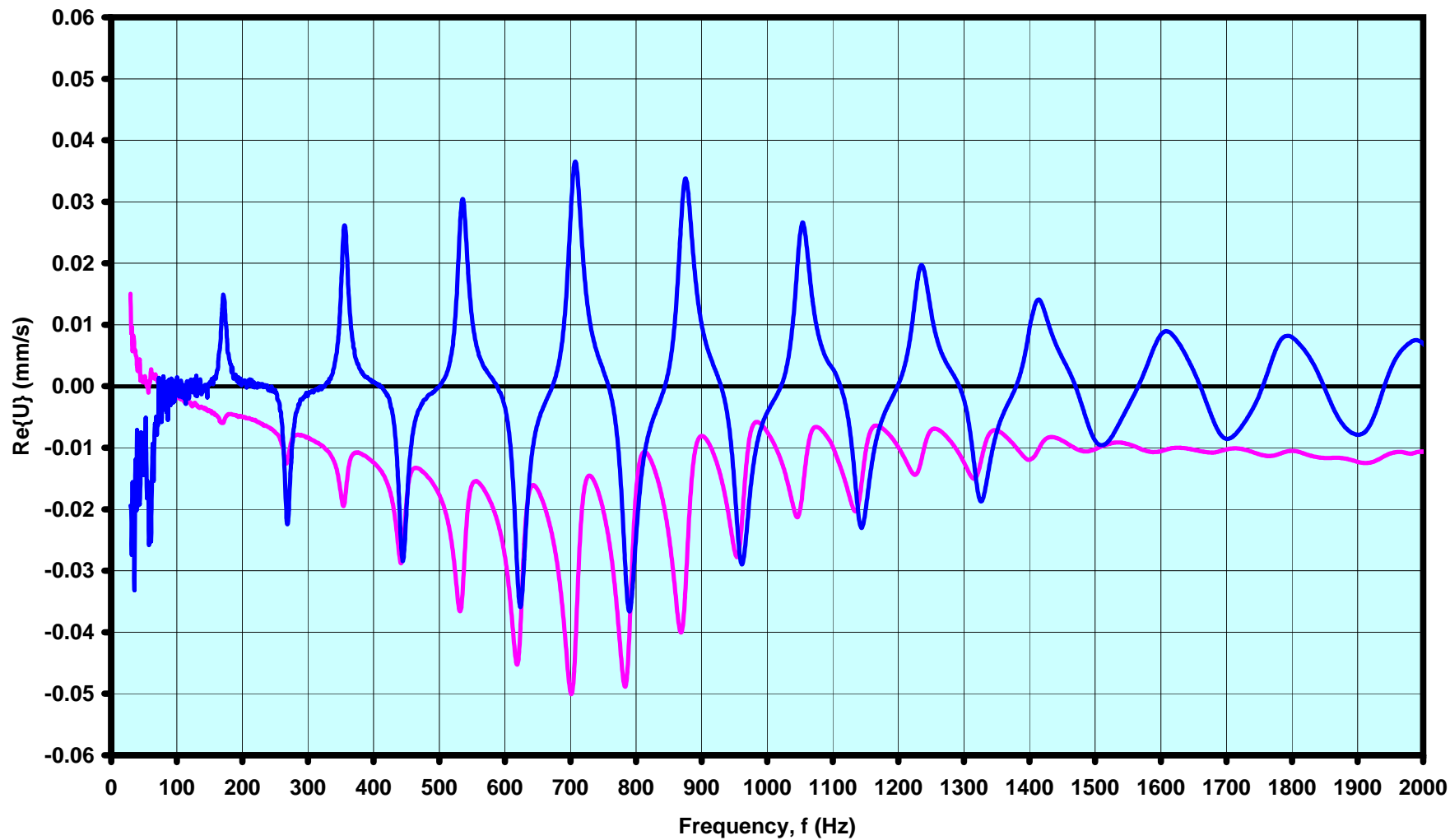


Bach Bb Trumpet Dn-Up-Dn 4LI Data: Pin & Pout Complex Plane
UIUC Physics 199POM/498POM 10/26/07



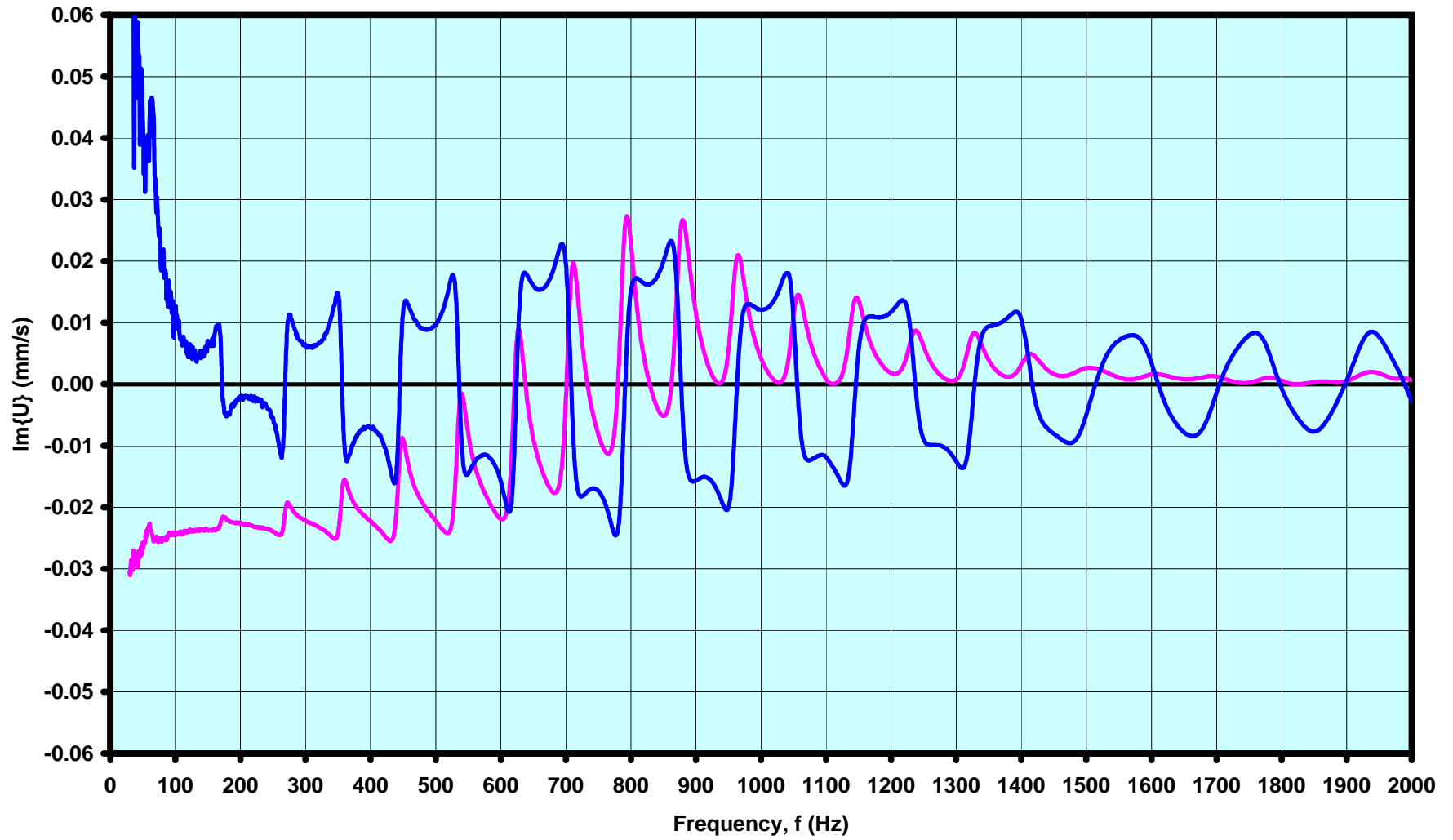
— X-Axis — Y-Axis — Corr Pin (Pa) — Corr Pout (Pa)

Bach Bb Trumpet Dn-Up-Dn 4LI Data: $\text{Re}\{U_{in}\}$ & $\text{Re}\{U_{out}\}$ vs. f
UIUC Physics 199POM/498POM 10/26/07



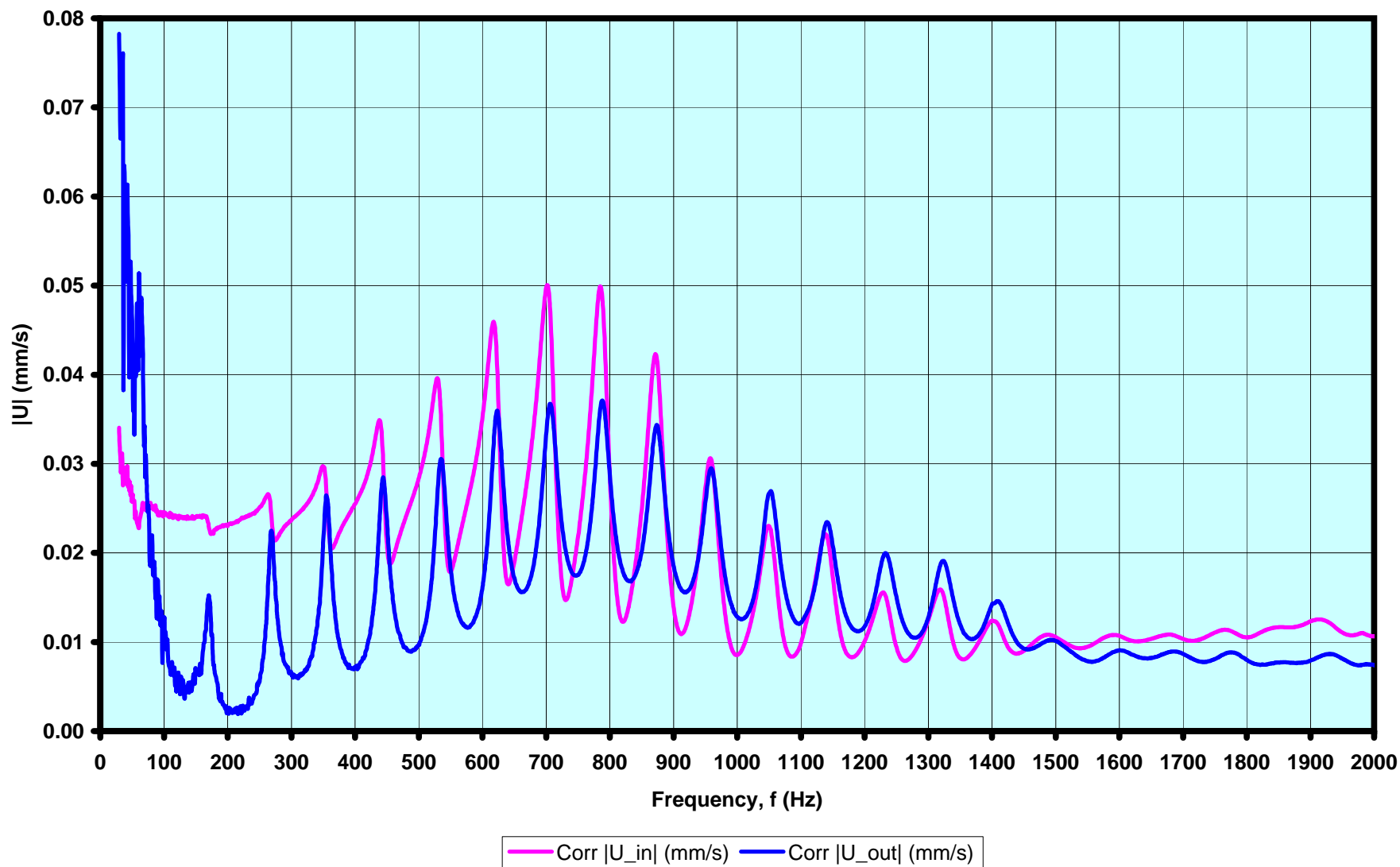
— X-Axis — Corr $\text{Re}(U_{in})$ (mm/s) — Corr $\text{Re}(U_{out})$ (mm/s)

Bach Bb Trumpet Dn-Up-Dn 4LI Data: $\text{Im}\{U_{in}\}$ & $\text{Im}\{U_{out}\}$ vs. f
UIUC Physics 199POM/498POM 10/26/07

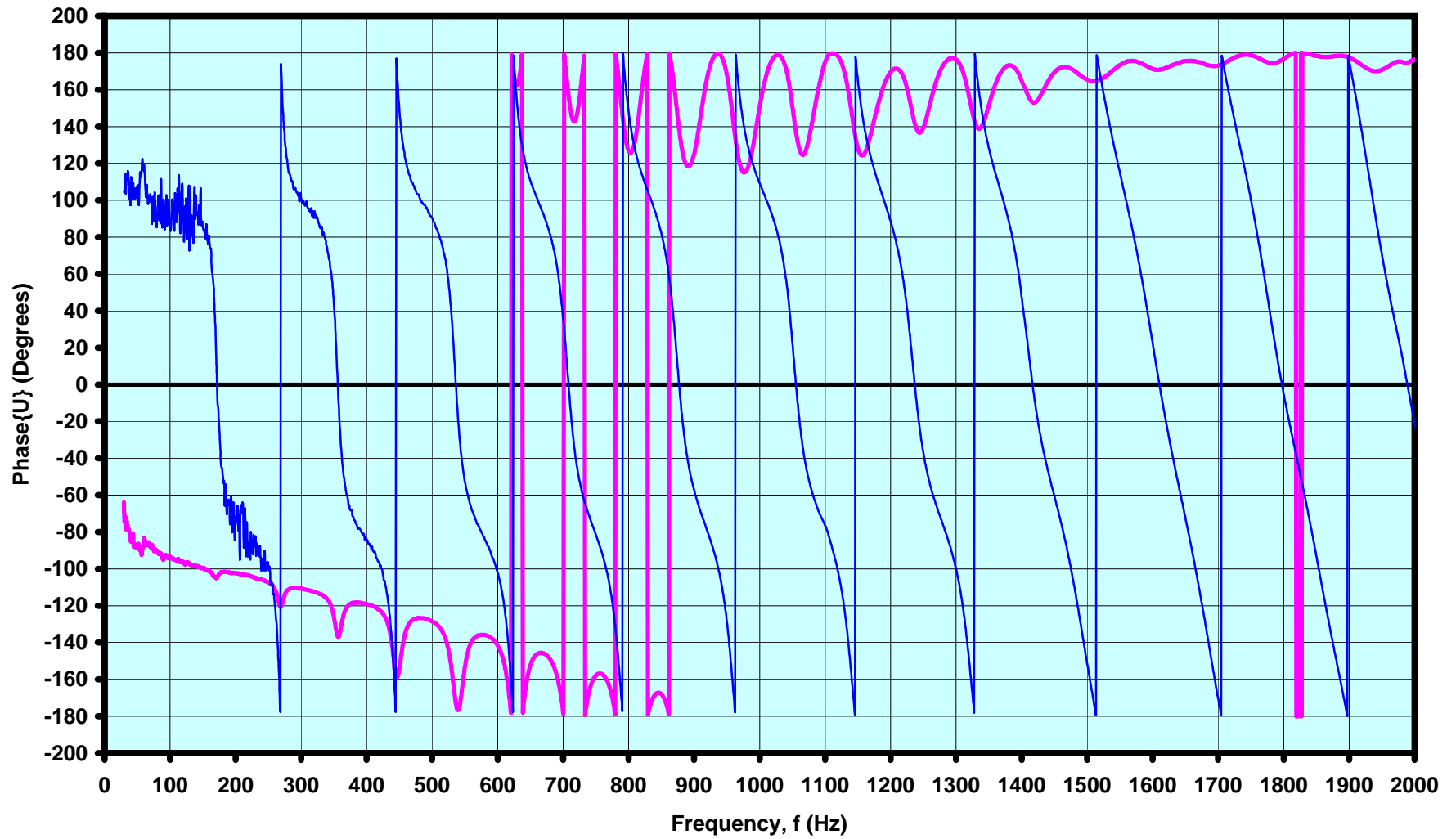


— X-Axis — Corr Im(Uin) (mm/s) — Corr Im(Uout) (mm/s)

Bach Bb Trumpet Dn-Up-Dn 4LI Data: $|U_{in}|$ & $|U_{out}|$ vs. f
UIUC Physics 199POM/498POM 10/26/07

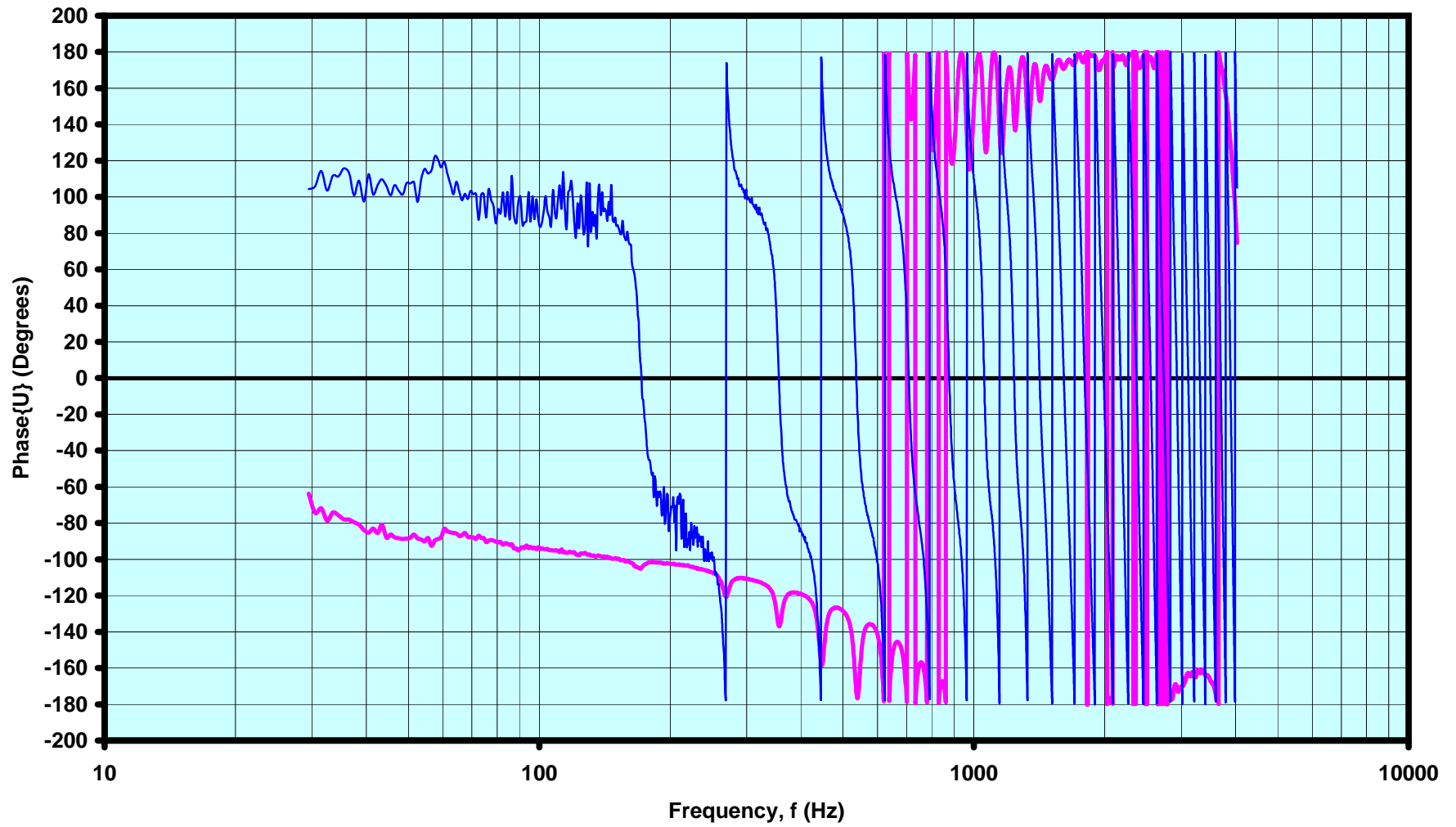


Bach Bb Trumpet Dn-Up-Dn 4LI Data: Phase{Uin} & Phase{Uout} vs. f
UIUC Physics 199POM/498POM 10/26/07



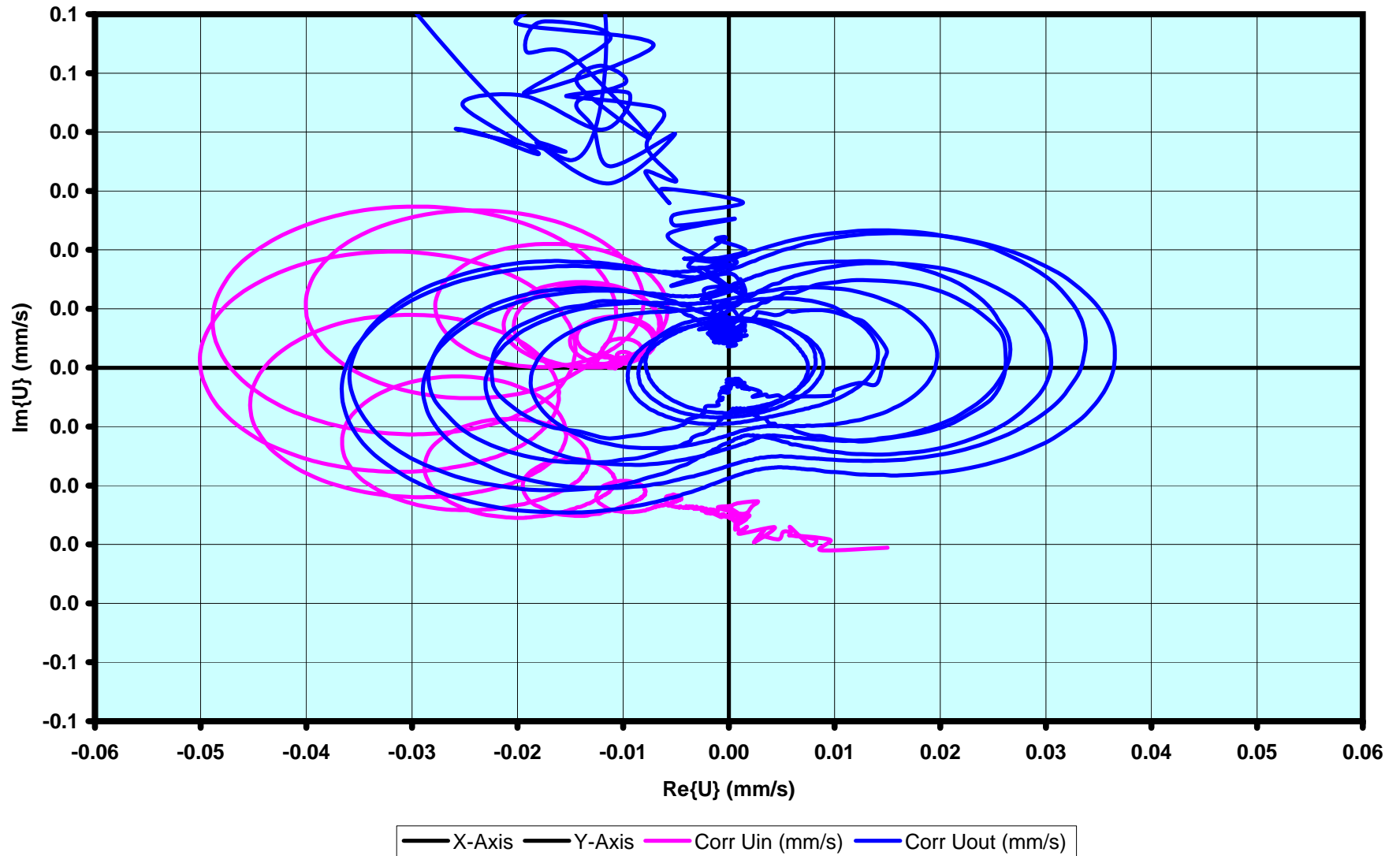
— X-Axis — Corr Phase{Uin} — Corr Phase{Uout}

Bach Bb Trumpet Dn-Up-Dn 4LI Data: Phase{Uin} & Phase{Uout} vs. Log f
UIUC Physics 199POM/498POM 10/26/07

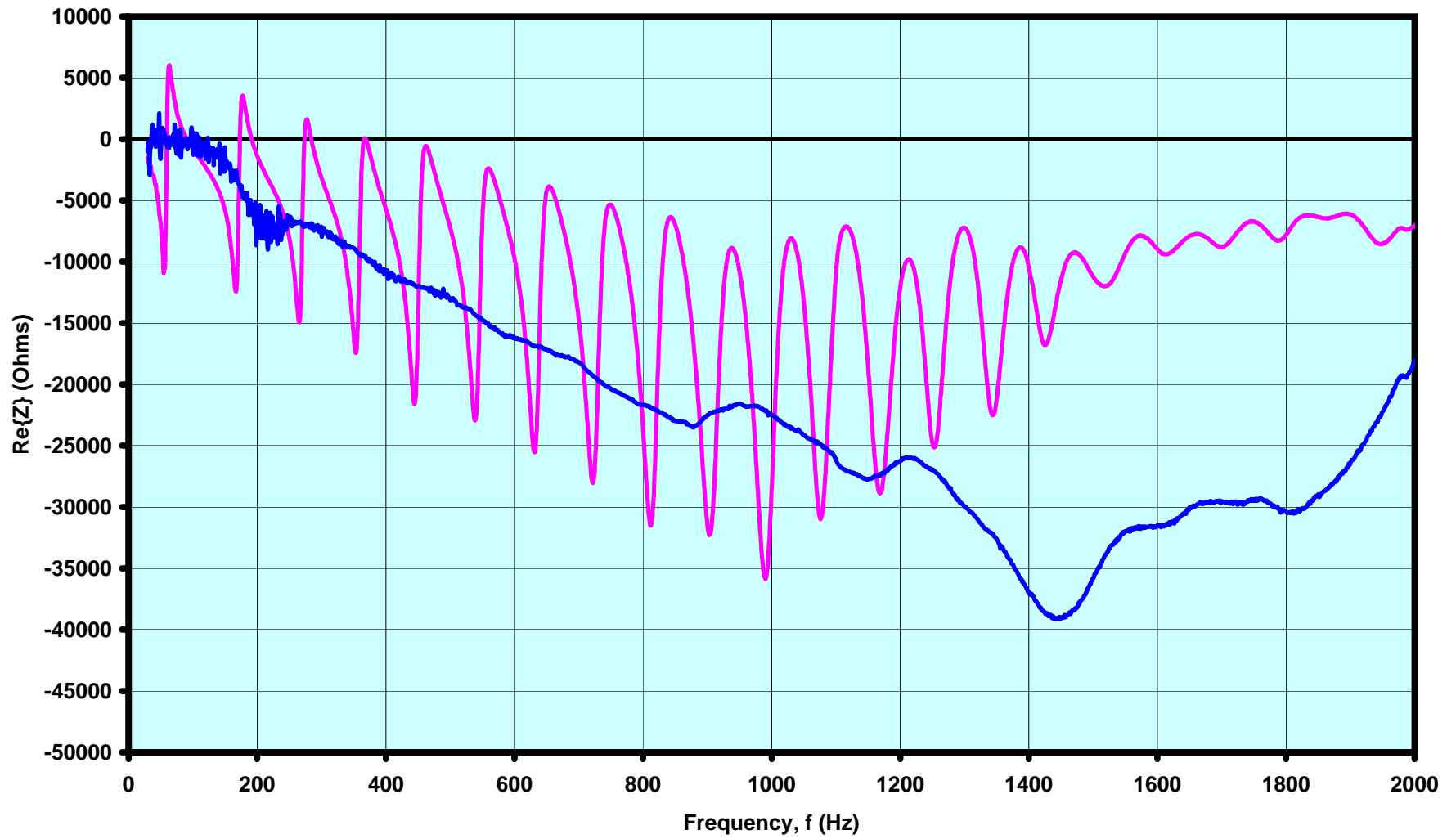


— X-Axis — Corr Phase{Uin} — Corr Phase{Uout}

Bach Bb Trumpet Dn-Up-Dn 4LI Data: Uin & Uout Complex Plane
UIUC Physics 199POM/498POM 10/26/07

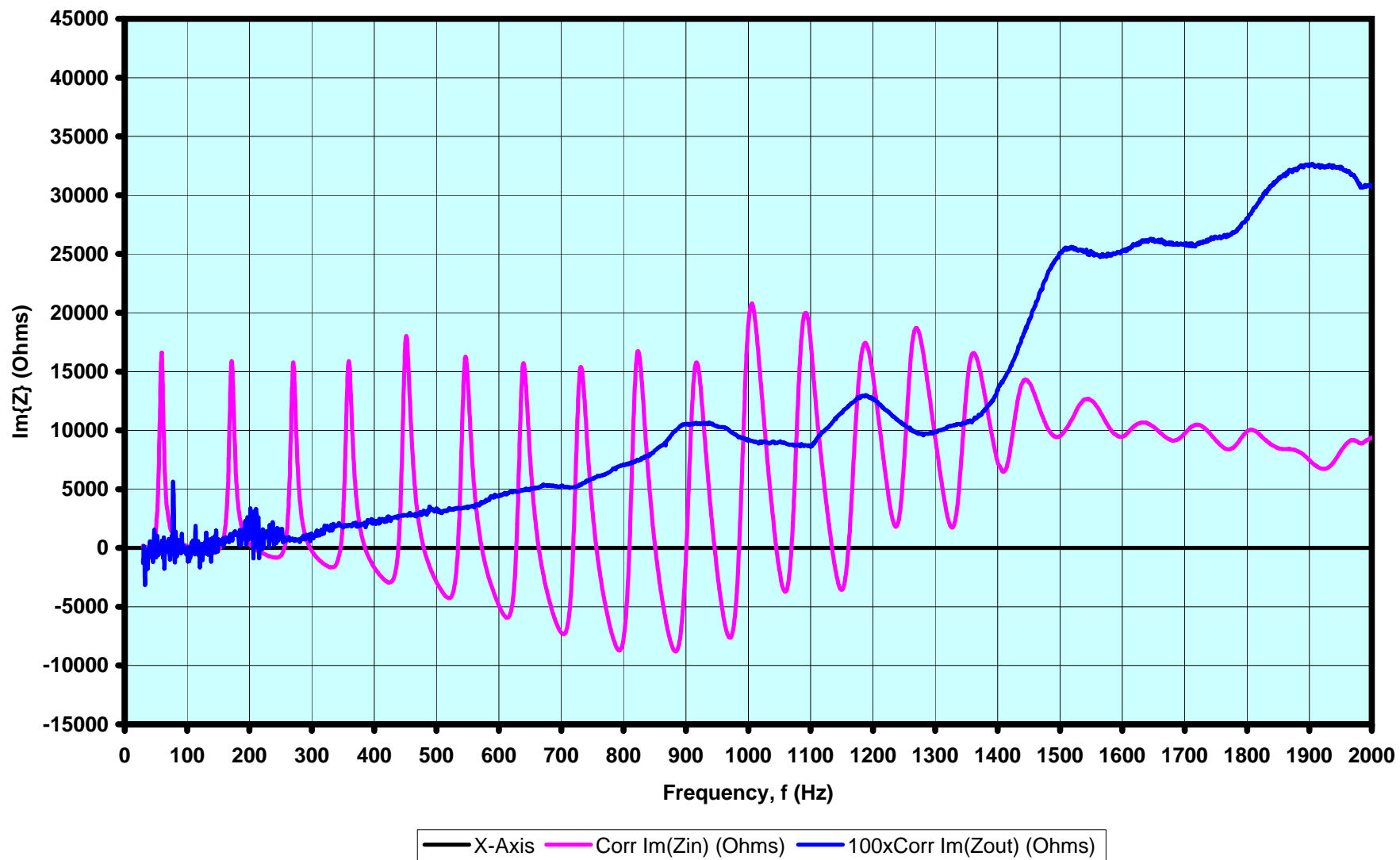


Bach Bb Trumpet Dn-Up-Dn 4LI Data: $\text{Re}\{Z_{in}\}$ & $\text{Re}\{Z_{out}\}$ vs. f
UIUC Physics 199POM/498POM 10/26/07

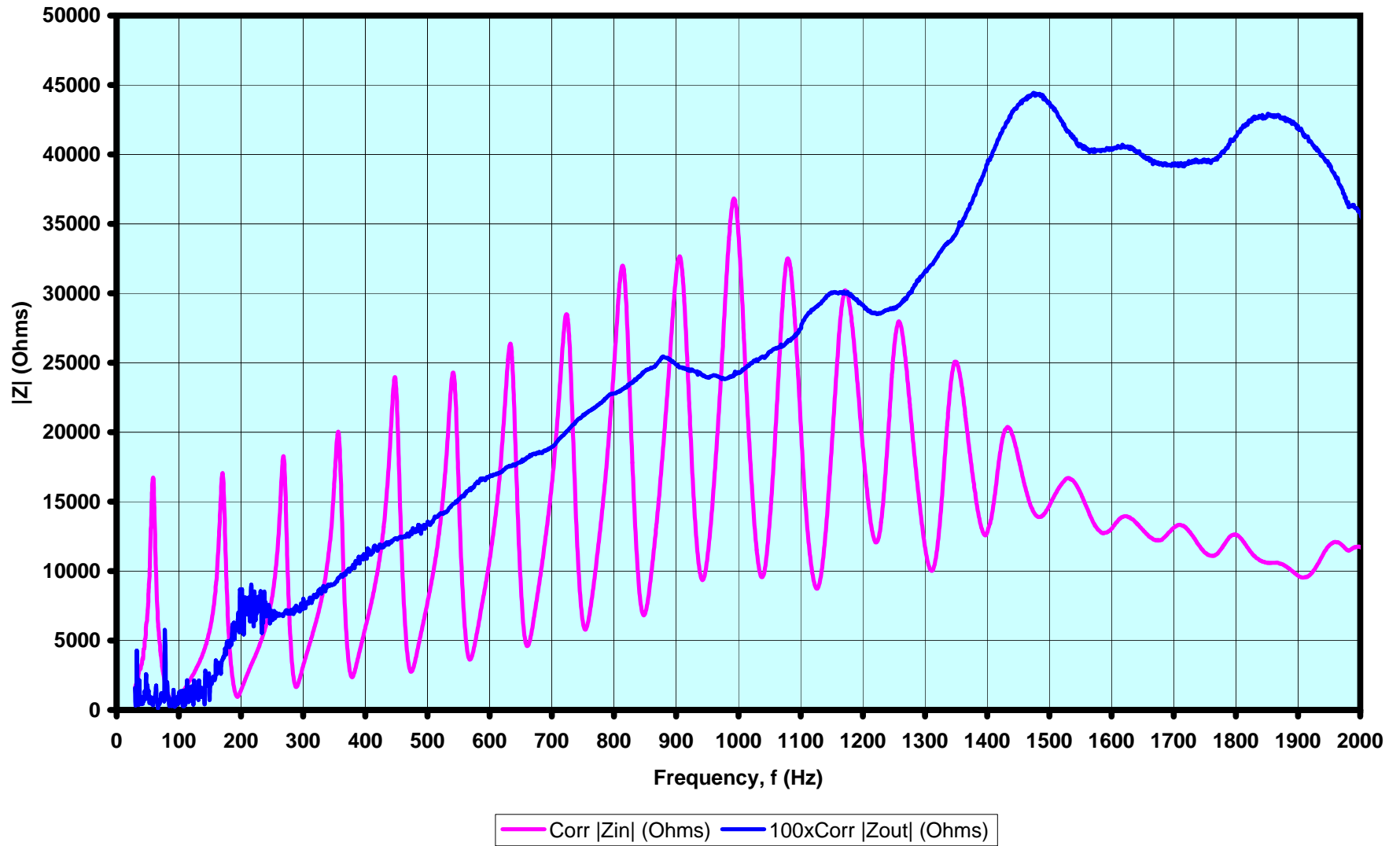


— X-Axis — Corr $\text{Re}\{Z_{in}\}$ (Ohms) — 100xCorr $\text{Re}\{Z_{out}\}$ (Ohms)

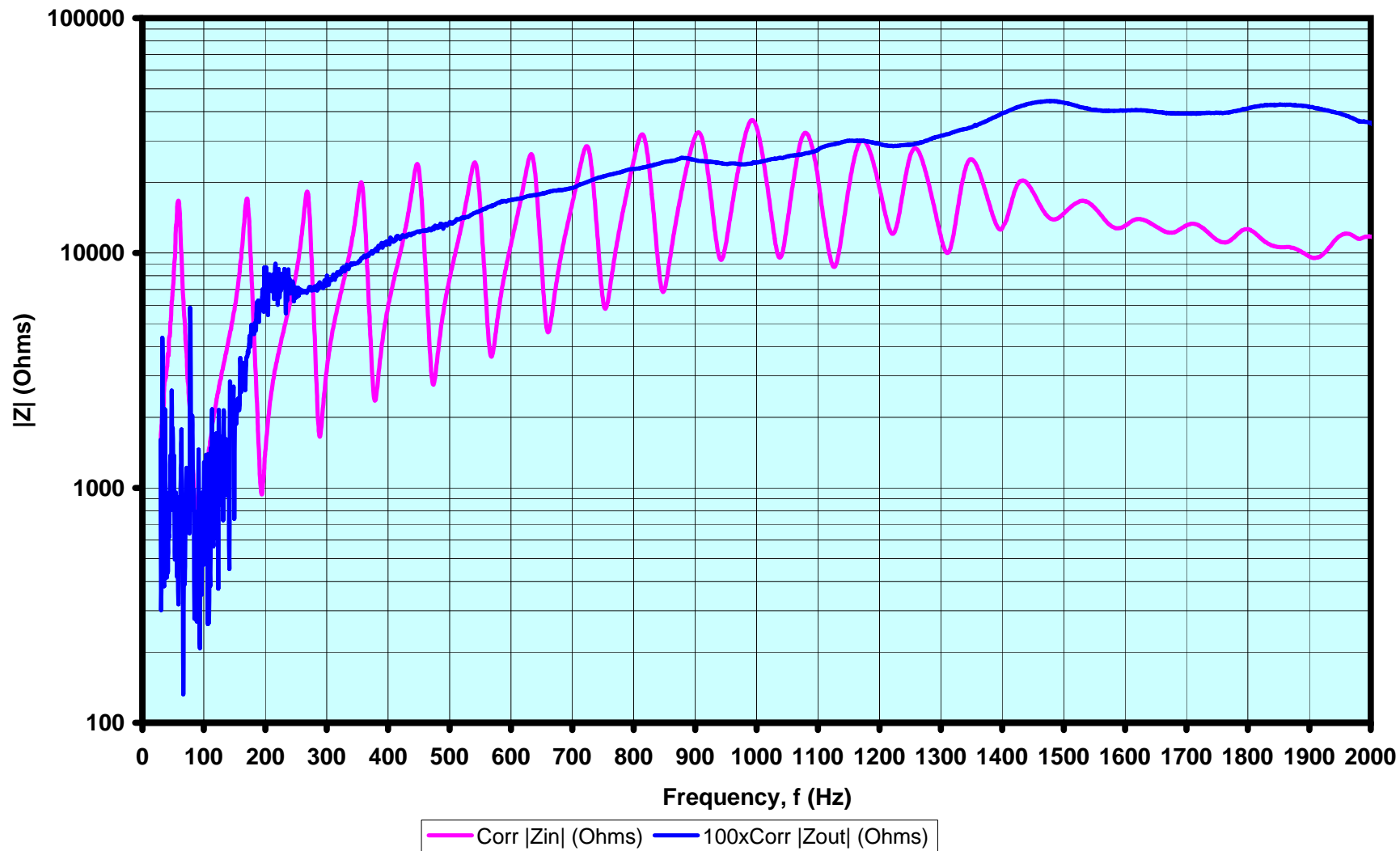
Bach Bb Trumpet Dn-Up-Dn 4LI Data: $\text{Im}\{Z_{in}\}$, $\text{Im}\{Z_{out}\}$ vs. f
UIUC Physics 199POM/498POM 10/26/07



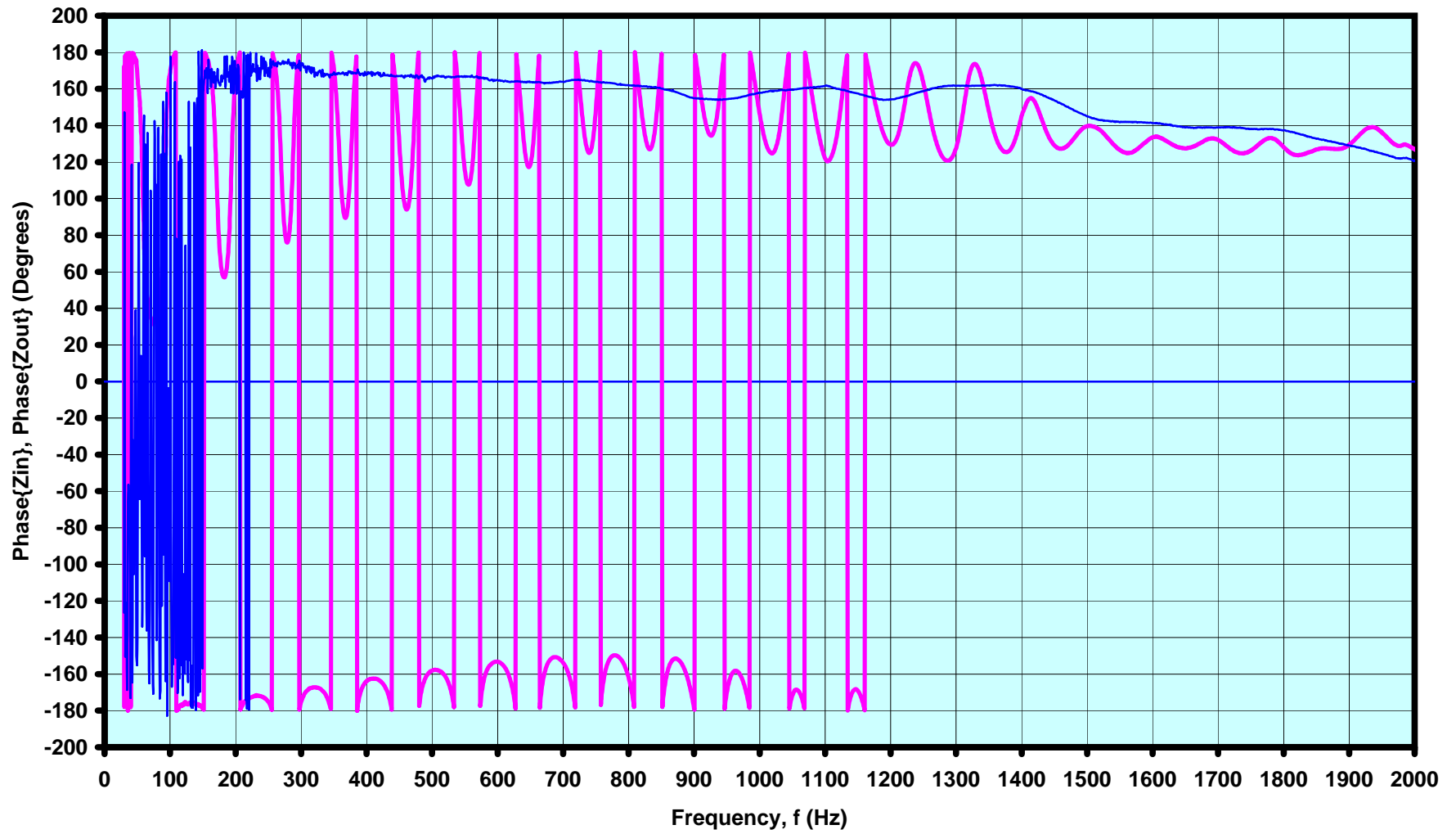
Bach Bb Trumpet Dn-Up-Dn 4LI Data: $|Z_{in}|$ & $|Z_{out}|$ vs. f
UIUC Physics 199POM/498POM 10/26/07



Bach Bb Trumpet Dn-Up-Dn 4LI Data: $|Z_{in}|$ & $|Z_{out}|$ vs. f
UIUC Physics 199POM/498POM 10/26/07
c.f. w/ $Z_{\text{free-field, air}} \sim 420 \text{ Ohms}$

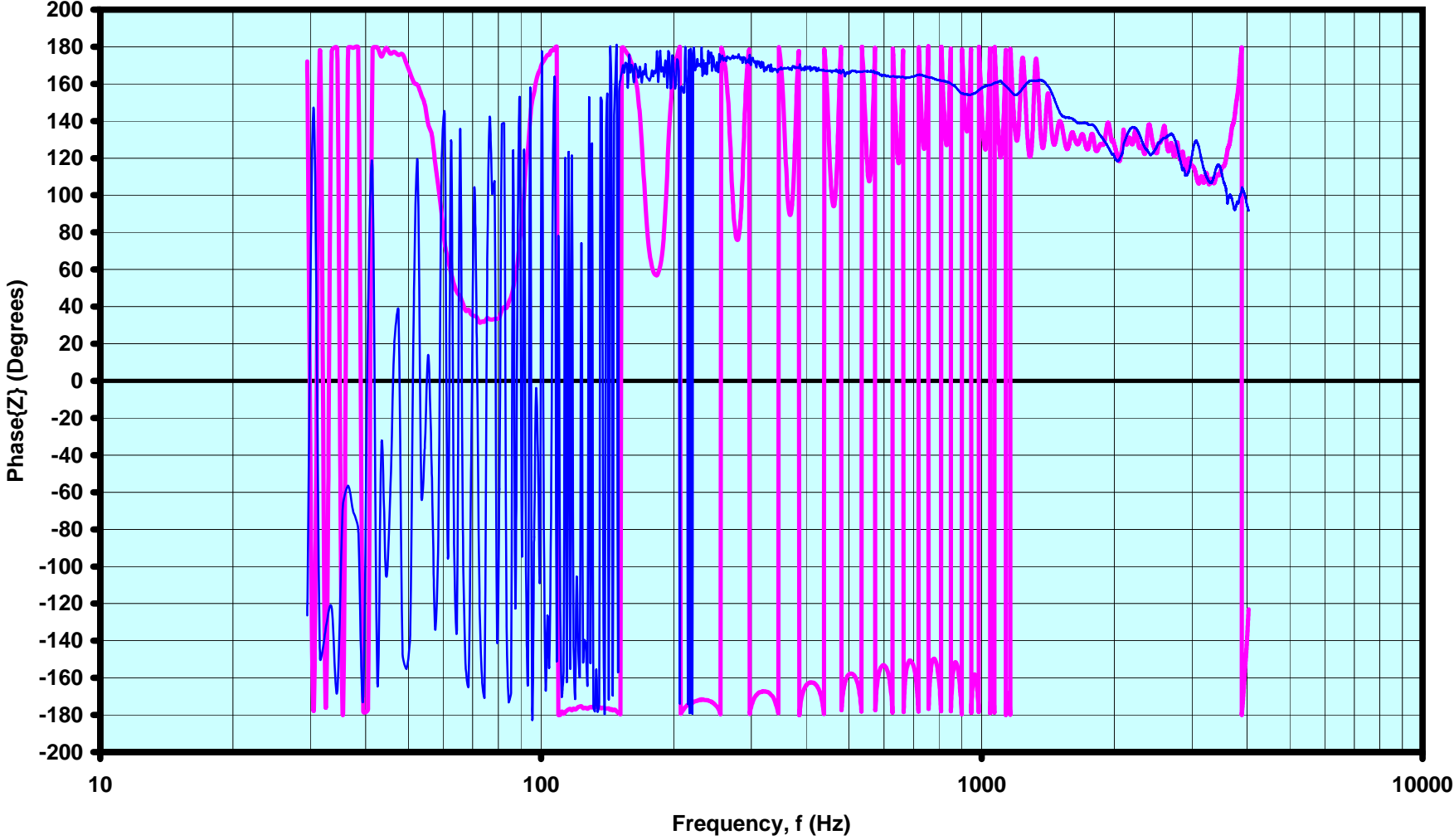


Bach Bb Trumpet Dn-Up-Dn 4LI Data: Phase{Zin} & Phase{Zout} vs. f
UIUC Physics 199POM/498POM 10/26/07



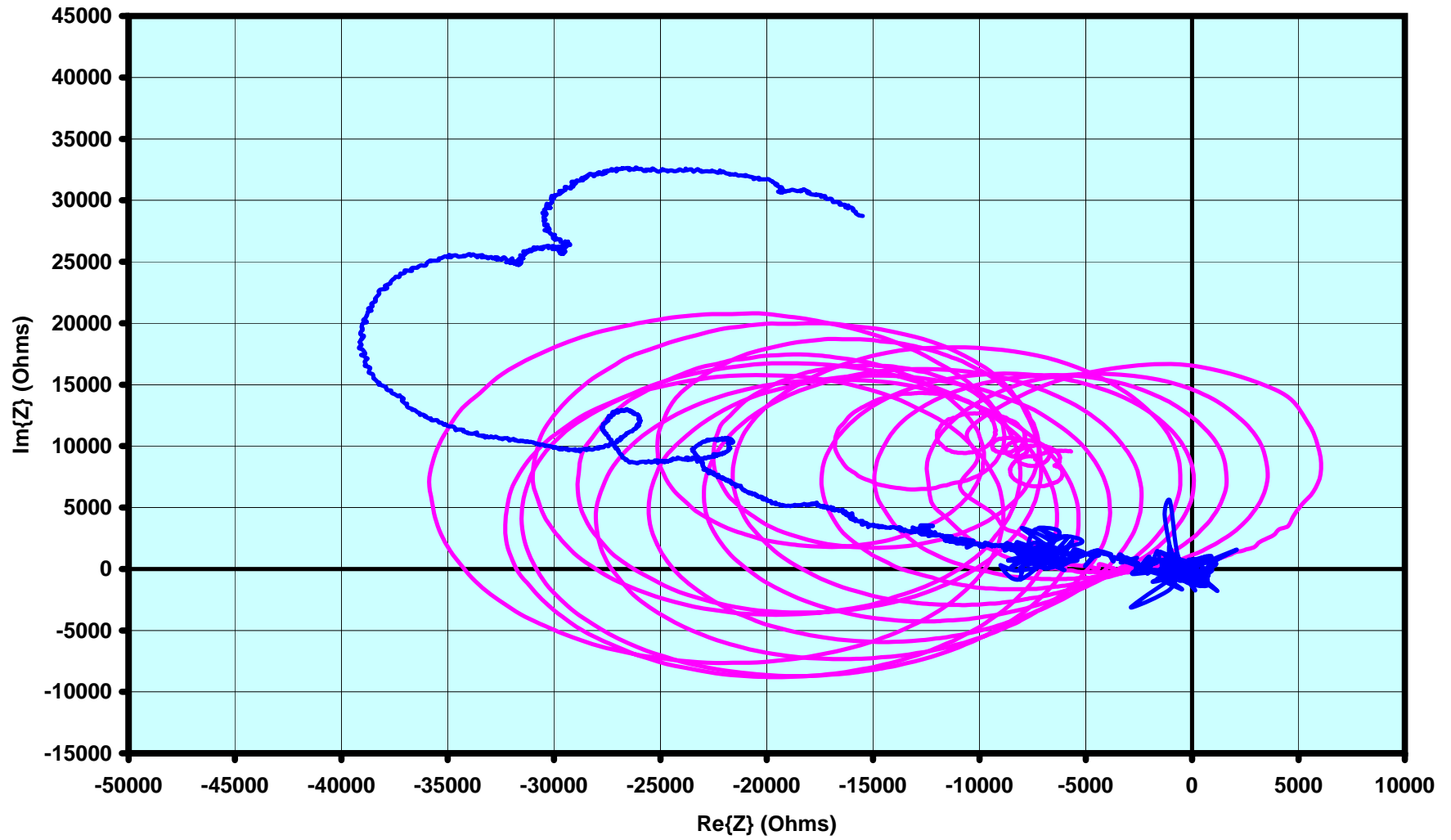
X-Axis Corr Phase{Zin} Corr Phase{Zout}

Bach Bb Trumpet Dn-Up-Dn 4LI Data: Phase{Zin} & Phase{Zout} vs. Log f
UIUC Physics 199POM/498POM 10/26/07



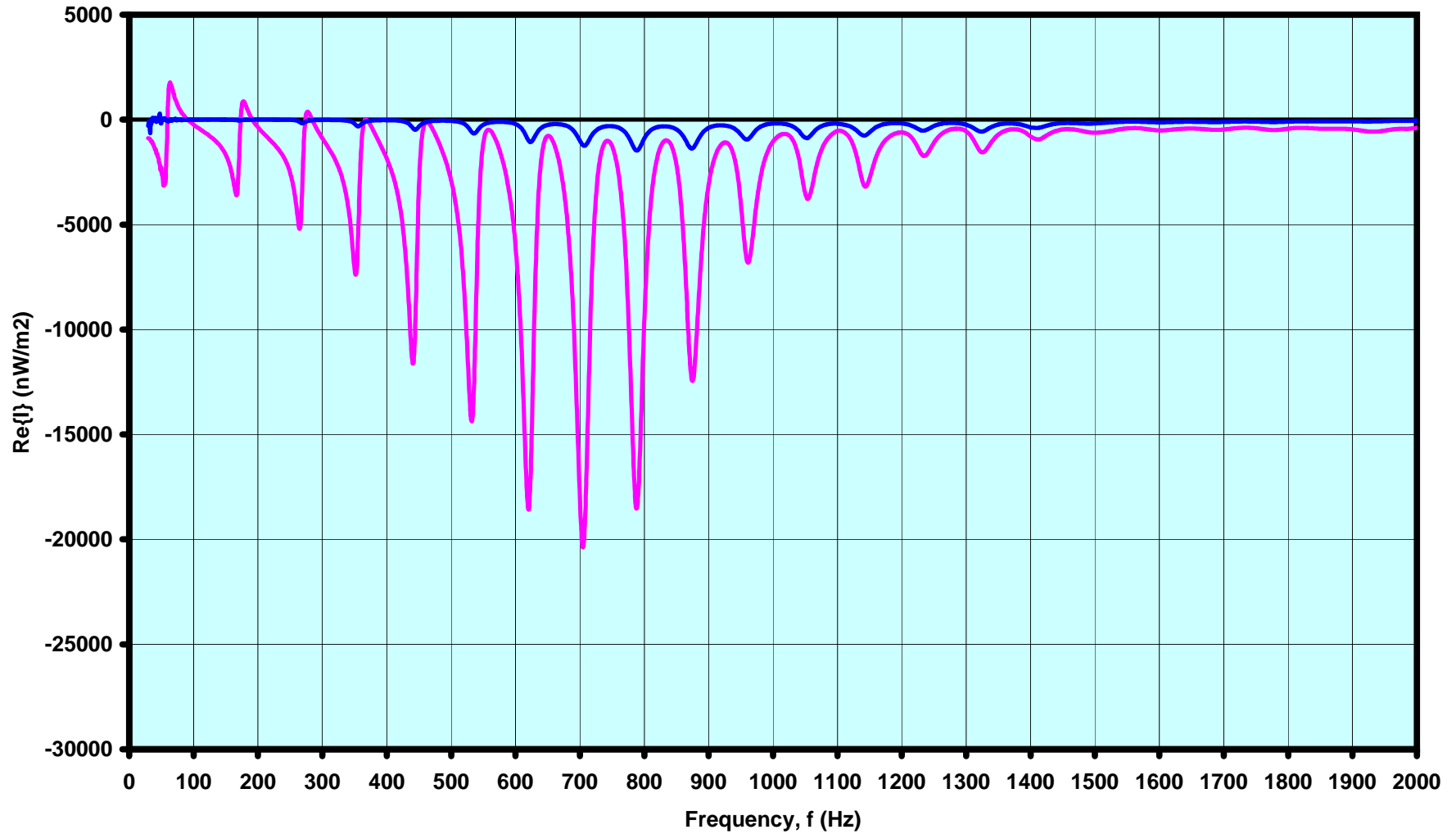
— X-Axis — Corr Phase{Zin} — Corr Phase{Zout}

Bach Bb Trumpet Dn-Up-Dn 4LI Data: Zin & Zout Complex Plane
UIUC Physics 199POM/498POM 10/26/07



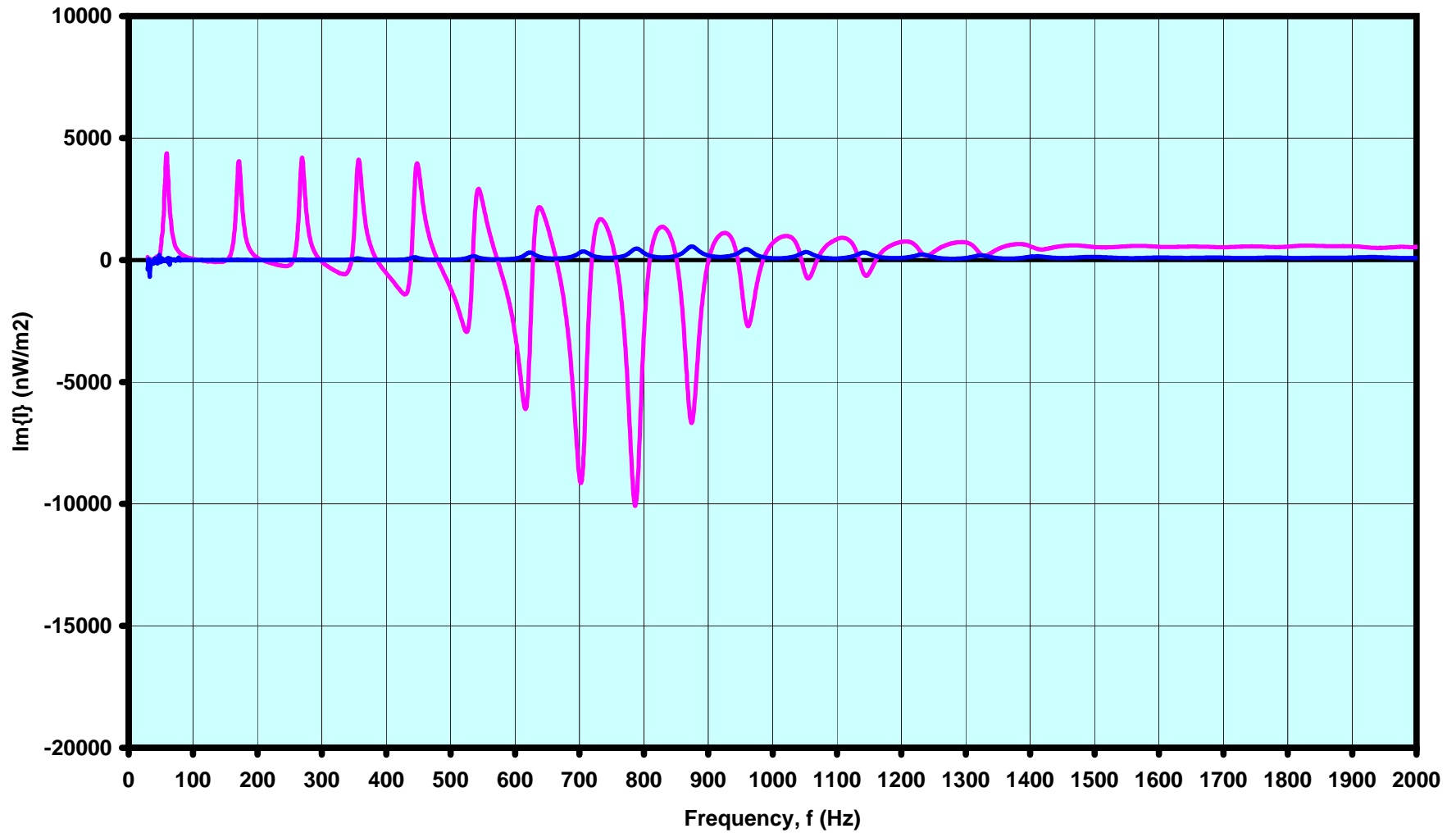
— X-Axis — Y-Axis — Corr Zin (Ohms) — 100xCorr Zout (Ohms)

Bach Bb Trumpet Dn-Up-Dn 4LI Data: $\text{Re}\{\text{lin}\}$ & $\text{Re}\{\text{lout}\}$ vs. f
UIUC Physics 199POM/498POM 10/26/07



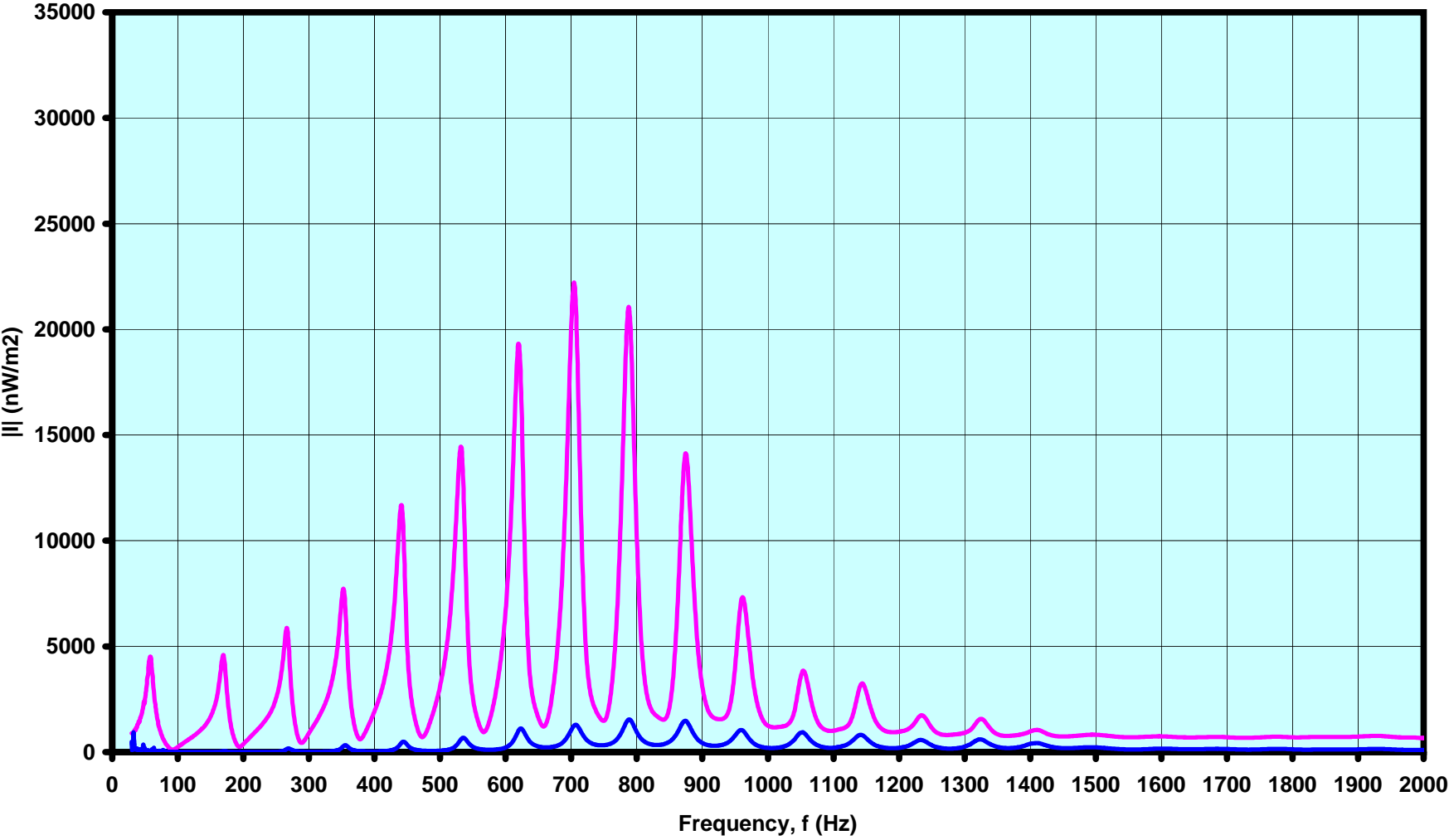
— X-Axis — $\text{Corr Re}\{\langle \text{lin} \rangle\}$ (nW/m²) — $10 \times \text{Corr Re}\{\langle \text{lout} \rangle\}$ (nW/m²)

Bach Bb Trumpet Dn-Up-Dn 4LI Data: $\text{Im}\{\text{lin}\}$ & $\text{Im}\{\text{lout}\}$ vs. f
UIUC Physics 199POM/498POM 10/26/07



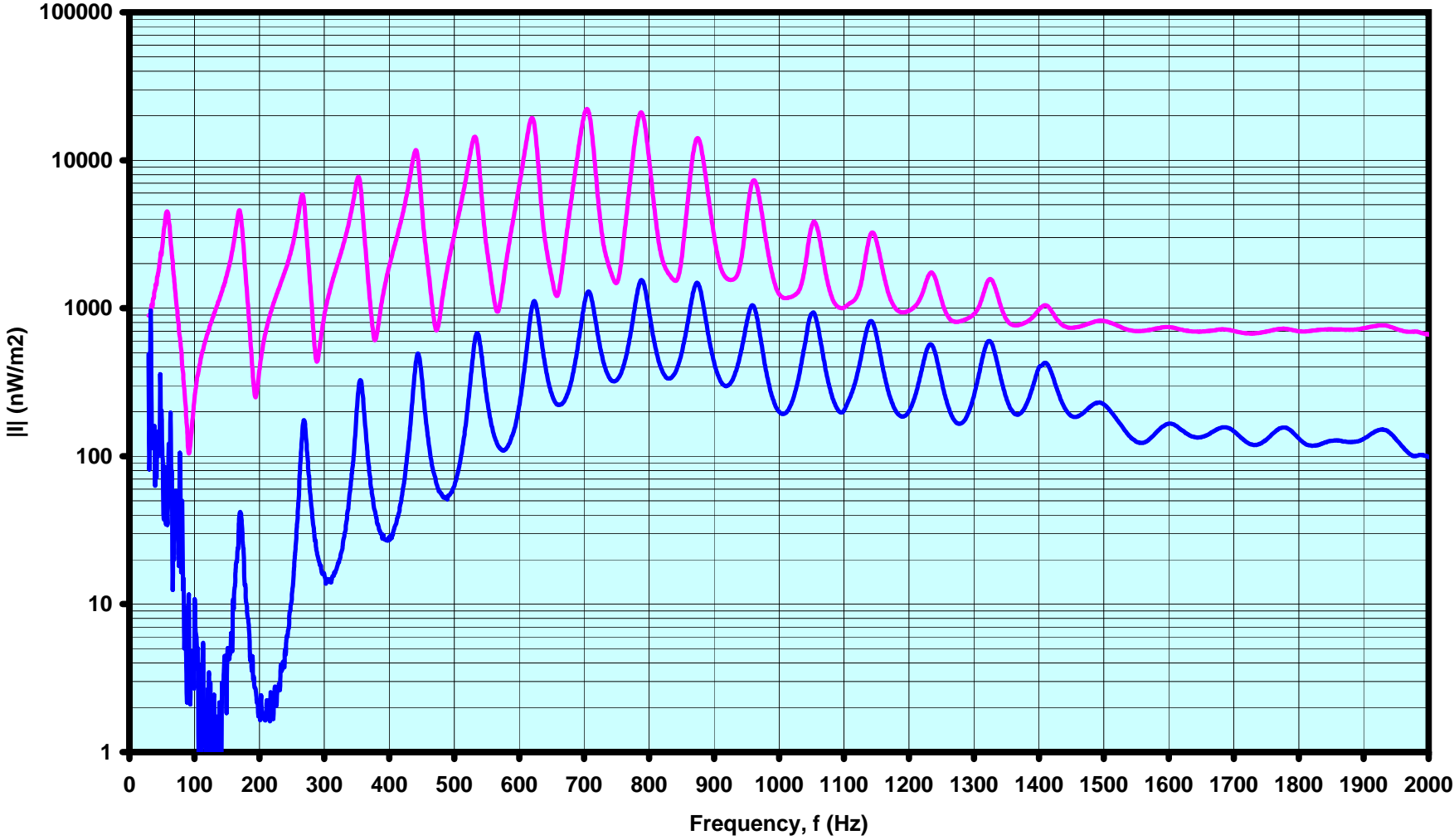
— X-Axis — Corr $\text{Im}\{\text{lin}\}$ (nW/m²) — 10xCorr $\text{Im}\{\text{lout}\}$ (nW/m²)

Bach Bb Trumpet Dn-Up-Dn 4LI Data: $|I_{in}|$ & $|I_{out}|$ vs. f
UIUC Physics 199POM/498POM 10/26/07



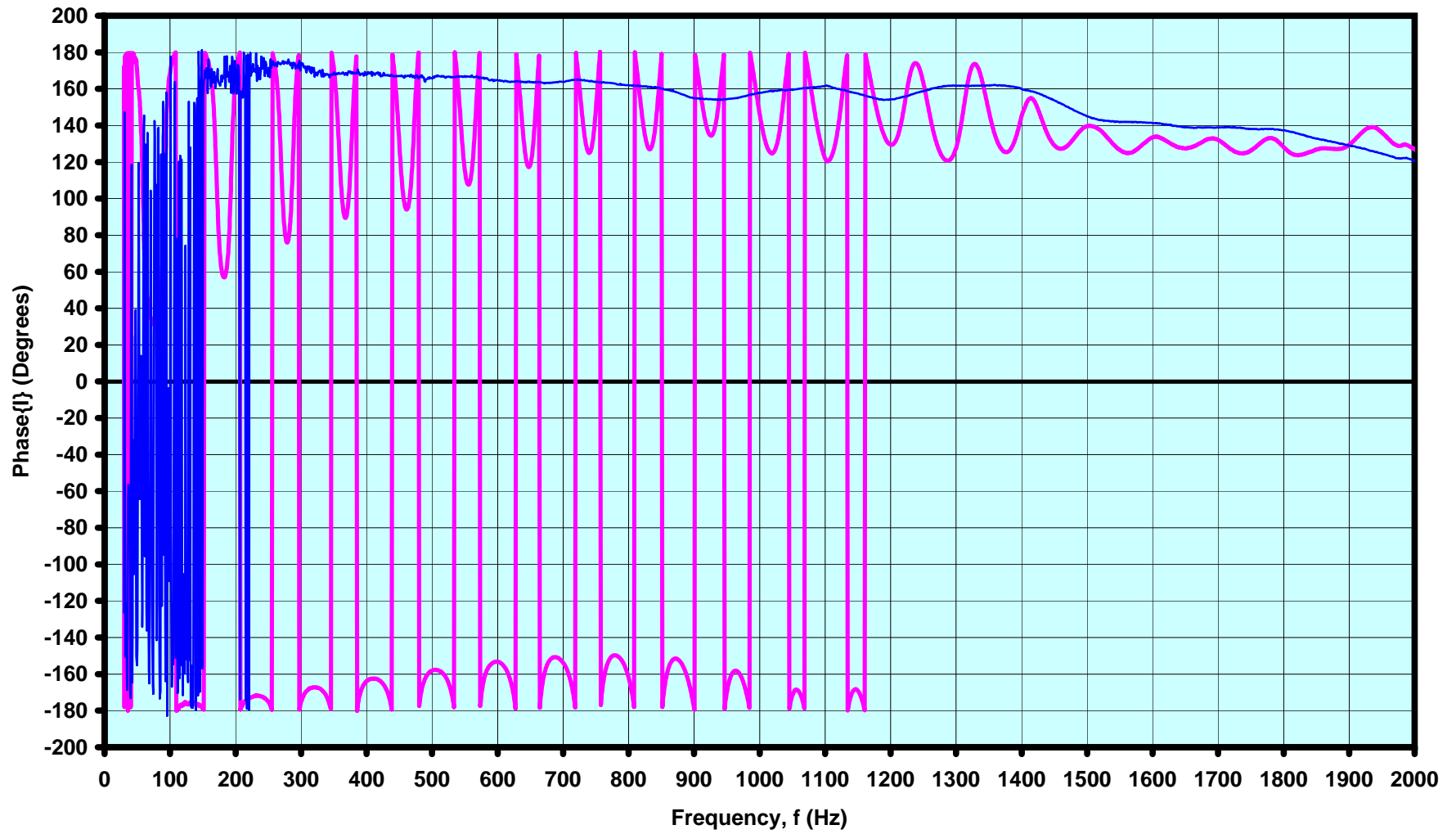
— $\text{Corr } \langle |I_{in} \rangle$ (nW/m²) — $10 \times \text{Corr } \langle |I_{out} \rangle$ (nW/m²)

Bach Bb Trumpet Dn-Up-Dn 4LI Data: $|I_{in}|$ & $|I_{out}|$ vs. f
UIUC Physics 199POM/498POM 10/26/07



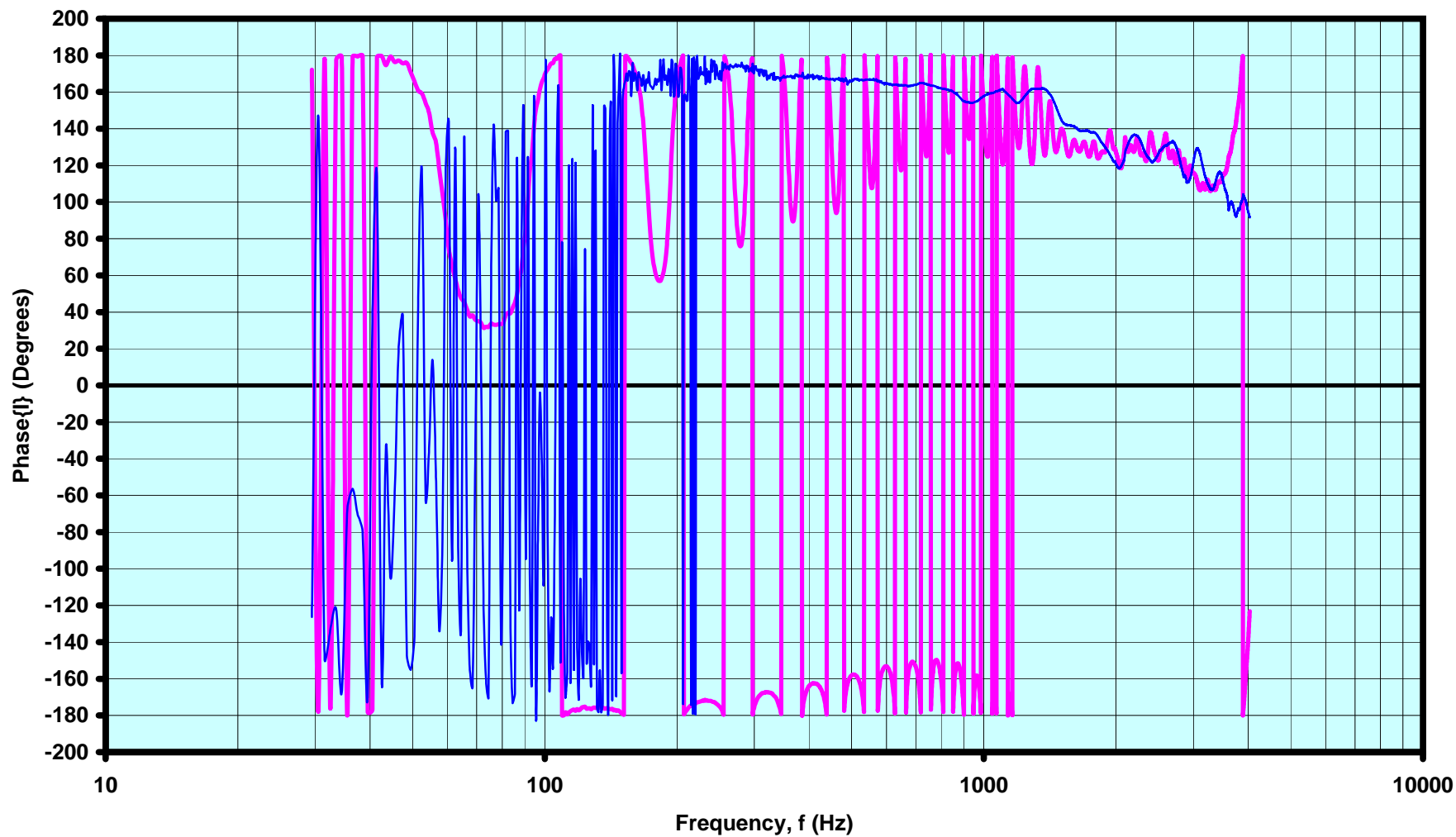
— $\text{Corr } \langle |I_{in}| \rangle$ (nW/m²) — $10 \times \text{Corr } \langle |I_{out}| \rangle$ (nW/m²)

Bach Bb Trumpet Dn-Up-Dn 4LI Data: Phase{lin} & Phase{lout} vs. f
UIUC Physics 199POM/498POM 10/26/07



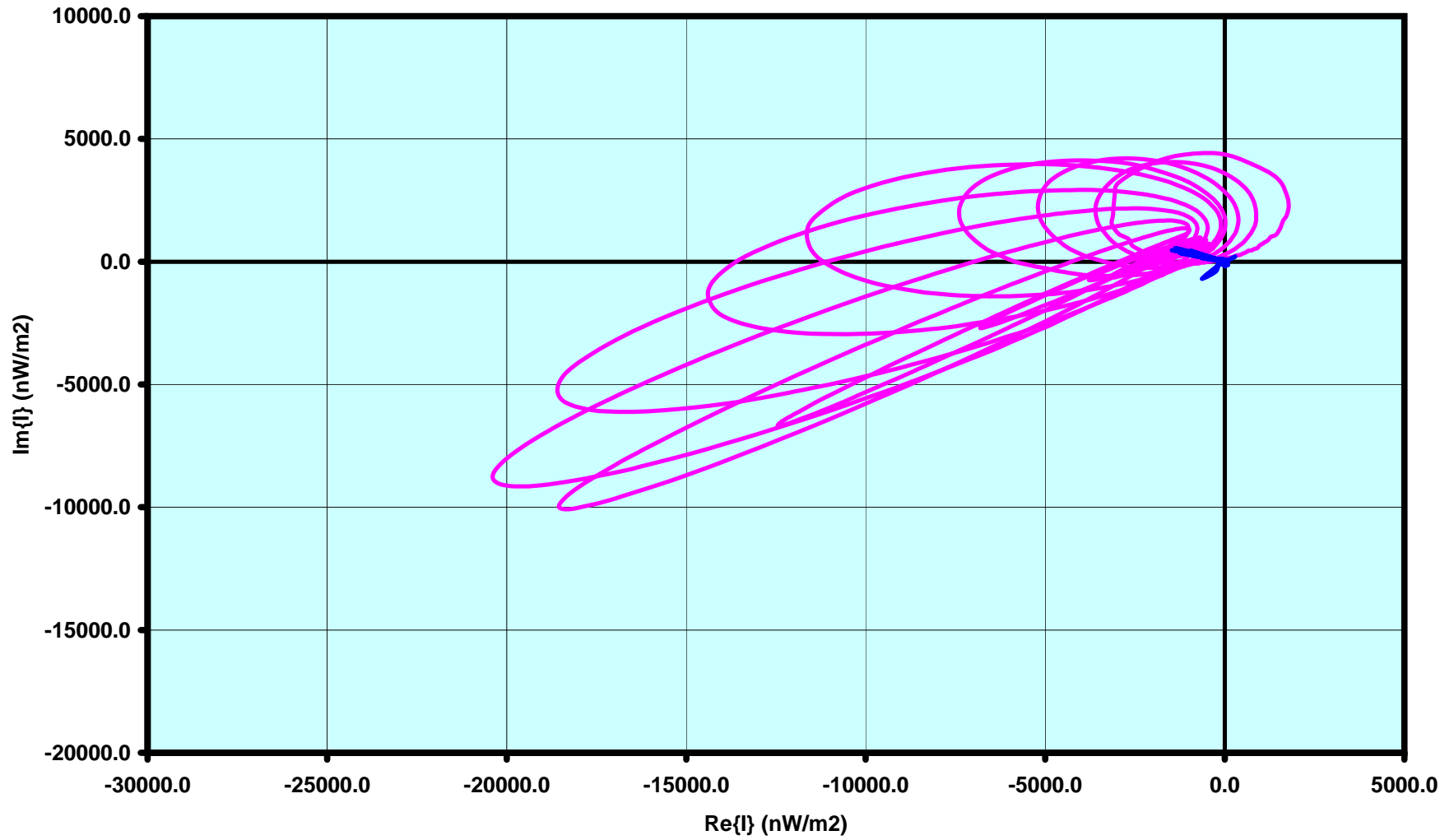
— X-Axis — Corr Phase{<lin>} — Corr Phase{<lout>}

Bach Bb Trumpet Dn-Up-Dn 4LI Data: Phase{lin} & Phase{lout} vs. Log f
UIUC Physics 199POM/498POM 10/26/07



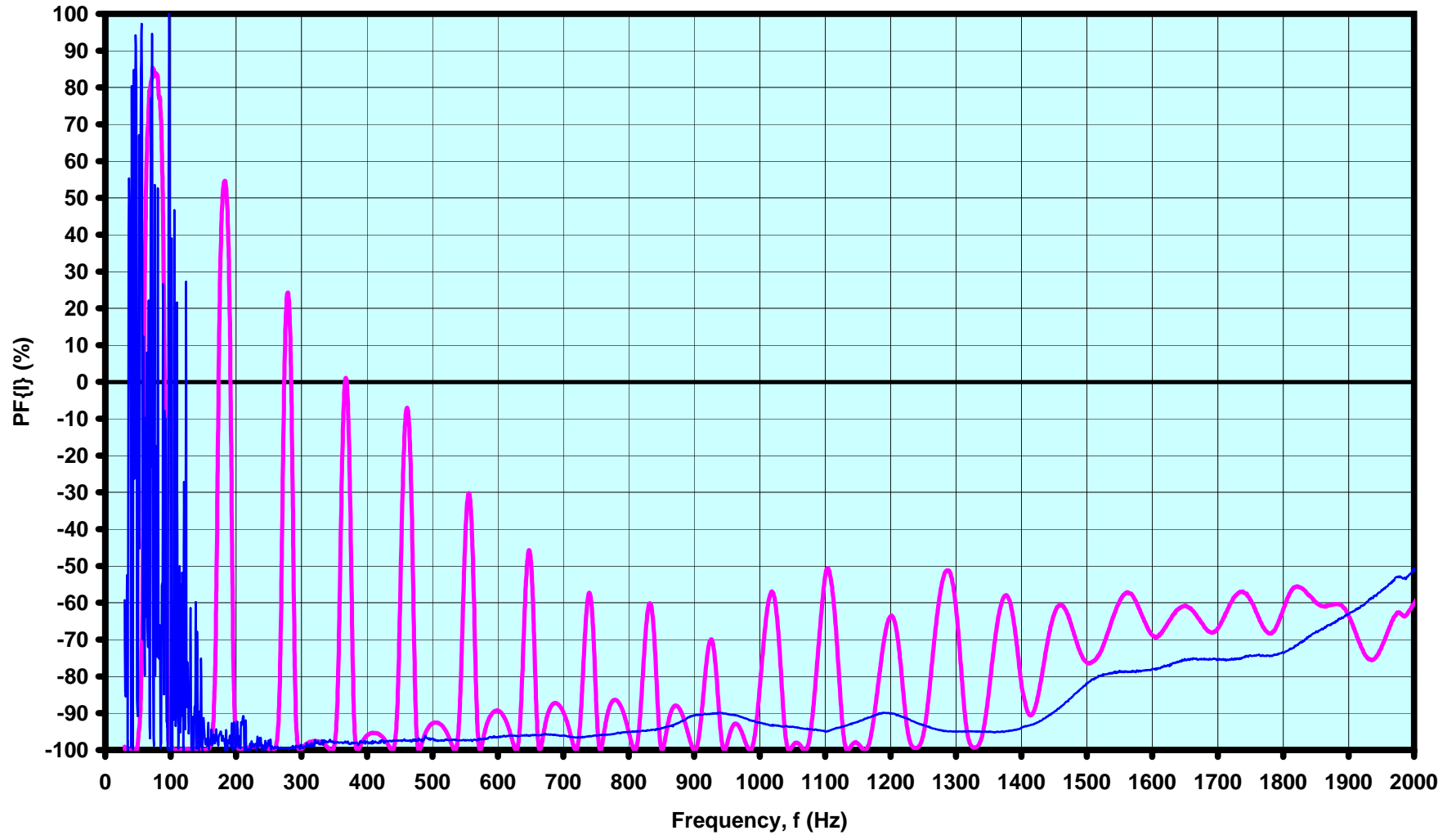
— X-Axis — Corr Phase{<lin>} — Corr Phase{<lout>}

Bach Bb Trumpet Dn-Up-Dn 4LI Data: lin & lout Complex Plane
UIUC Physics 199POM/498POM 10/26/07



— X-Axis — Y-Axis — $\text{Corr} \langle \text{lin} \rangle$ (nW/m²) — $10 \times \text{Corr} \langle \text{lout} \rangle$ (nW/m²)

Bach Bb Trumpet Dn-Up-Dn 4LI Data: PF{lin} & PF{lout} vs. f
UIUC Physics 199POM/498POM 10/26/07



— X-Axis — Corr PF(lin) — Corr PF(lout)