

Notes of the Trumpet:



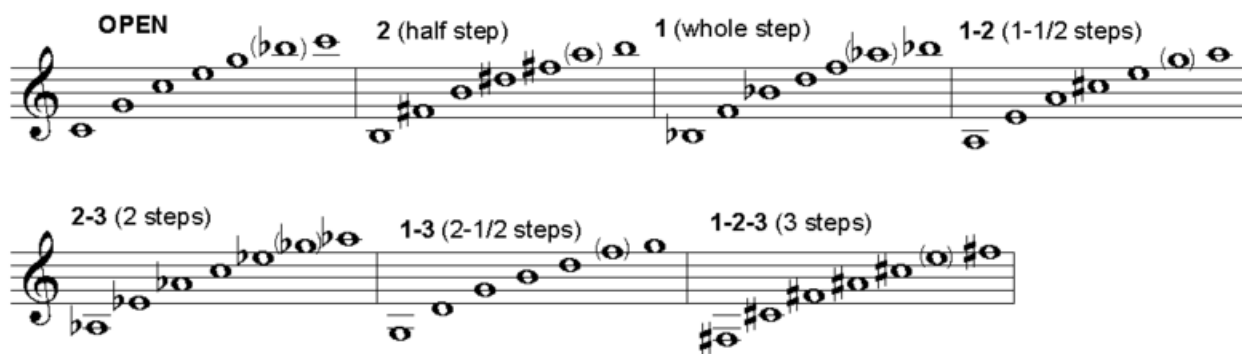
The trumpet has 3 valves that change the tube length of the trumpet and thus alter the pitch played. The fingering scheme of the trumpet arises from the length of each valve's tubing; air passing through longer lengths of tubing produces a lower pitch:

Pressing valve "1" lowers the pitch by one whole step

Pressing valve "2" lowers the pitch by one half step

Pressing valve "3" lowers the pitch by one and a half steps

Extending the third valve slide when the third valve is in use further slightly lowers the pitch, improving intonation.



1-2-3 Valve Combinations:

			<u>Note(s):</u>
0	0 0 0	UP-UP-UP	C4/G4/C5
1	1 0 0	DN-UP-UP	B3b/F4/B4b
2	0 1 0	UP-DN-UP	B4/F4#/B5
1-2	1 1 0	DN-DN-UP	A3/E4/A4
3	0 0 1	UP-UP-DN	A3/E4/A4
1 - 3	1 0 1	DN-UP-DN	G3/D4/G4
2-3	0 1 1	UP-DN-DN	A3b/E4b/A4b
1-2-3	1 1 1	DN-DN-DN	F3#/C4#/F4#

Note: Frequency (Hz):

G3	196.00
A3	220.00
B3	246.94
C4	261.63
D4	293.66
E4	329.63
F4	349.23
G4	392.00
A4	440.00
B4	493.88
C5	523.25

Trumpet Fingerings

Alternate/Possible

All pitches in Bb (lower 1 step for concert pitch)

000- C4, G4, C5, E5, G5, **Bb5**, C6, D6, E6, **Gb6**, G6

100- Bb3, F4, D5, F5, **Ab5**, Bb5, **C6**, **D6**, **E6**, F6

010- B3, Gb4, B4, Eb5, Gb5, **Ab5**, B5, **C6**, Db6, **D6**, Eb6, **E6**, Gb6

110- A3, E4, A4, Db5, **E5**, **G5**, **B5**, **Db6**, **Eb6**, **E6**, **G6**

011- **G3**, Ab3, **D4**, Eb4, Ab4, **C5**, **Eb5**, **Gb5**, Ab5, **Bb5**, **D6**, **Eb6**, **Gb6**

101- **Gb3**, G3, **Db4**, D4, **G4**, **B4**, **D5**, **F5**, **G5**, **A5**, **B5**, **Db6**, **D6**, **F6**, **G6**

001- **Ab3**, **A3**, **E4**, **A4**, **Eb4**, **E5**, **A5**, **Db6**, **Eb6**, **E6**, **G6**

111- E3, F3, Gb3, **C4**, Db4, **Gb4**, **Bb4**, **Db5**, **E5**, **Gb5**, **Ab5**, **Db6**, **E6**, **Gb6**

Note Name	Regular Fingering (3 valves)	Piccolo Fingering (4 valves)	Alternate Fingering
F#	1-2-3	N/A	N/A
G	1-3	N/A	N/A
G#	2-3	N/A	N/A
A	1-2	N/A	3
Bb	1	N/A	N/A
B	2	N/A	N/A
Middle C	0	(pedal tone) 0	N/A
C#	1-2-3	1-2-3-4	*
D	1-3	1-3-4	*
Eb	2-3	2-3-4	N/A (*)
E	1-2	3-4	3
F	1	1-4	N/A
F#	2	2-4	1-2-3
G	0	4	1-3
G#	2-3	2-3	N/A
A	1-2	1-2	3
Bb	1	1	1-2-3
B	2	2	1-3
C	0	0	2-3
C#	1-2	1-2-3	3
D	1	1-3	1-3
Eb	2	2-3	2
E	0	1-2	1-2
F	1	1	N/A
F#	2	2	1-2-3
G	0	0	1-3
G#	2-3	2-3	1
A	1-2 (3 alternate fingering)	1-2	3
Bb	1	1	1-2-3, also 0
B	2	2	1-3, also 1-2
High C	0	0	1
C#	1-2 (2 alternate fingering)	1-2	2
D	1	1	0
Eb	2	2	2-3
E	0	0	1-2
F	1	1	
F#	2	2	
G	0	0	
G#	2-3	2-3	
A	1-2	1-2	
Bb	1	1	
B	2	2	
Double High C	0	0	

* Note: Because this note is often sharp, many trumpeters extend the 3rd valve slide when it is played.